

NHS quality and risk profile

The Care Quality Commission's quality and risk profiles (QRPs) bring together information about a care providers and provide an estimate of risk of non-compliance against each of the 16 essential standards of quality and safety

		Risk Estimate:	
Involvement and information		Latest	Previous
Outcome 1	Respecting and involving people who use the service	As expected	Excellent
Outcome 2	Consent to care and treatment	As expected	As expected

Personalised care

Outcome 4	Care and welfare of people who use services	Excellent	Excellent
Outcome 5	Meeting nutritional needs	Excellent	Excellent
Outcome 6	Cooperating with other providers	As expected	As expected

Safeguarding and safety

Outcome 7	Safeguarding people who use services from abuse	As expected	As expected
Outcome 8	Cleanliness and infection control	As expected	As expected
Outcome 9	Management of medicines	As expected	Excellent
Outcome 10	Safety and suitability of premises	Excellent	Excellent
Outcome 11	Safety, availability and suitability of equipment	Insufficient data	Insufficient data

Suitability of staffing

Outcome 12	Requirements relating to workers	As expected	As expected
Outcome 13	Staffing	Insufficient data	Insufficient data
Outcome 14	Supporting staff	As expected	As expected

Quality and management

Outcome 16	Assessing and monitoring the quality of service provision	As expected	As expected
Outcome 17	Complaints	As expected	As expected
Outcome 21	Records	As expected	As expected

Source: CCQ

Never Events

No never events reported year to date

Source: Datix

Standard: None in year

Definitions: NPSA

CQUIN: Commissioning for Quality & Innovation

The 2011/12 Service Level Agreement has a number CQUIN schemes. A summary of the schemes is provided below.

Acute

CQUIN	Comment
VTE	See figures below
Patient Experience	Figures available at the end of the year
Enhanced Recovery Programme	Data to follow
COPD and Smoking Cessation	Data to follow
Discharge Planning	Data to follow
Out of ICU Cardiac Arrests	See figures below

Community

CQUIN	Comment
VTE	Data to follow
Care Closer to Home	Data to follow
Long Term Conditions	Data to follow

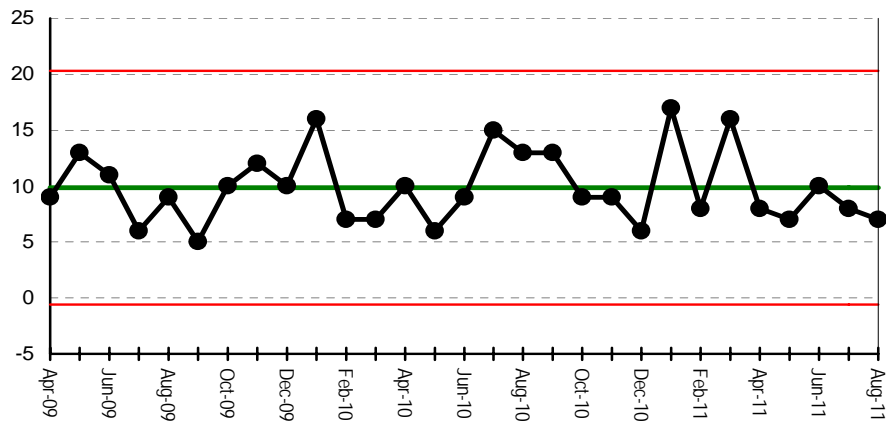
VTE (Acute)

a) Risk assessment completed on admission. Standard: 90%

Aug 11 - 91.7%; YTD - 90.9%

b) Appropriate prophylaxis: Baseline to be confirmed

Number of VTE admissions



Based on primary diagnosis of DVT or PE

Source: UNIFY reporting

Out of ICU Cardiac Arrests

a) Number of out of ICU cardiac arrests. Standard <40 in year

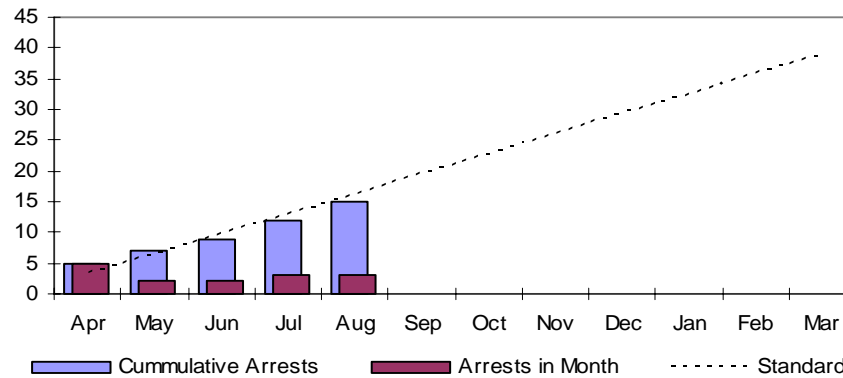
See chart below

b) Completed sets of 6 vital signs:

Q1 baseline - 67% missing at least one of the six vital signs

c) Patients admitted to Critical Care in under 90 mins: Baseline to be confirmed

Number of Out of ICU cardiac arrests



Source: Monthly internal reporting

Overall Mortality Rate

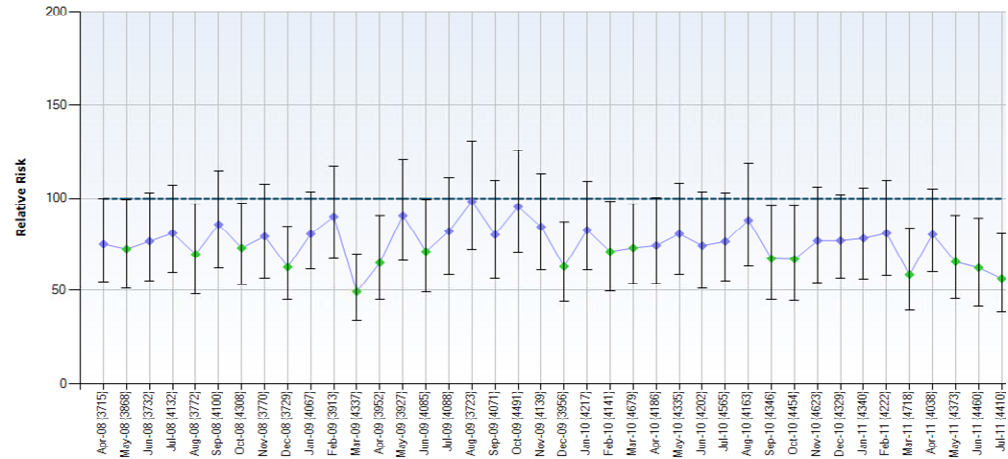
Benchmark (Dr Fosters Intelligence/NHS Choices. Standardised Mortality Rate, England)
Standardised on total England data = 100, Aug 2010 - July 2011)

Trust	RR	Trust	RR
Homerton	113	Chelsea and Westminster	81
Croydon Health	105	North West London	81
Hillingdon	101	King's College	78
Barking, Havering and Redbridge	101	Guy's and St Thomas'	76
Whipps Cross	93.1	Kingston	76
North Middlesex	91.8	Barts and the London	75
Lewisham	91.4	Newham	72
Ealing	90.6	St George's Healthcare	72
West Middlesex	87.5	Whittington	72
South London Healthcare	87	University College London	71
Barnet and Chase Farm	85.4	Royal Free Hampstead	71
Epsom and St Heliers	85	Imperial College Healthcare	66

Target to be less than 100

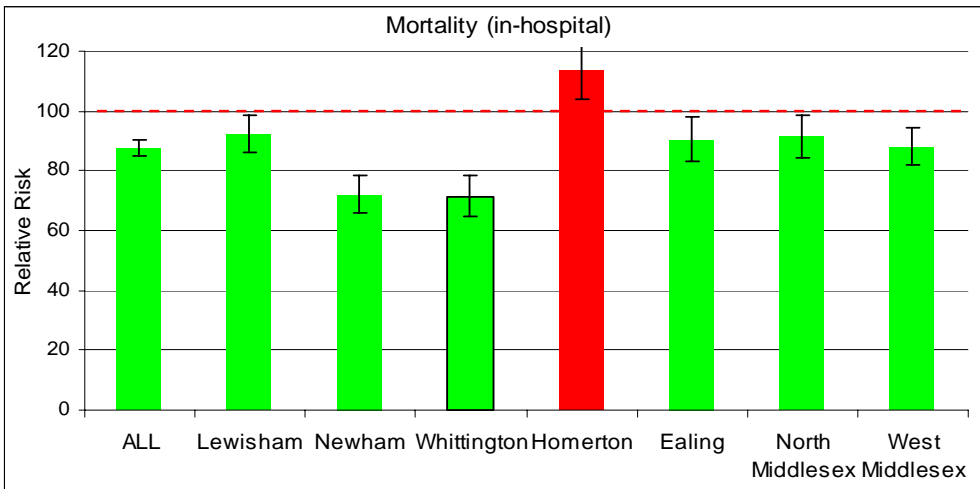
Mortality Rates over time

low is good



target: to be Blue/Green rated

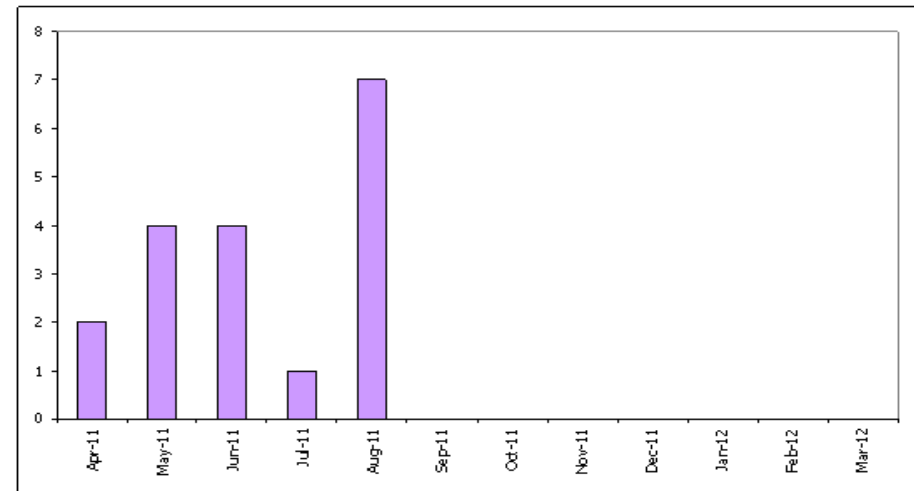
Against a Peer Group of similar London hospitals - last 12 months (Aug 10 - Jul 11)



source: Dr Foster

Pressure Ulcers (Grades 3 and 4)

low is good



Standard: NHSL patient safety express suggest 50% reduction
(monitoring period to be agreed by the Quality and Safety Board)

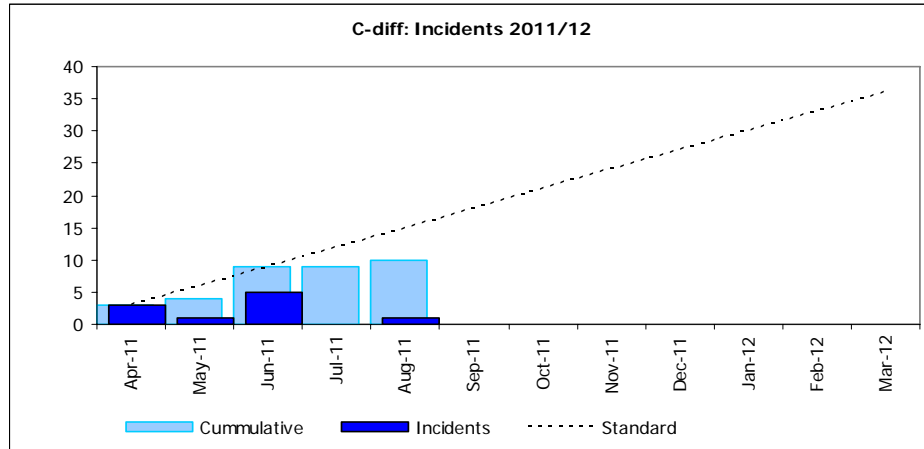
Figures include community services.

Healthcare Acquired Infections

Aug-11

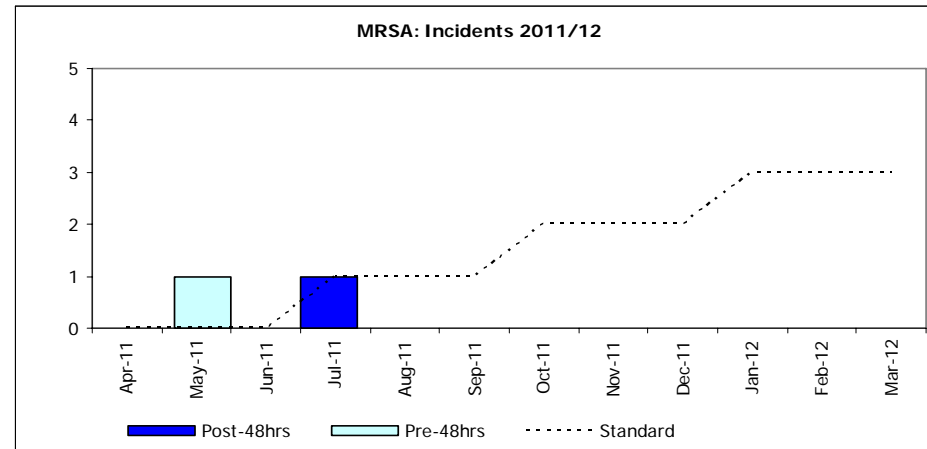
Clostridium difficile

Less than 36 in full year



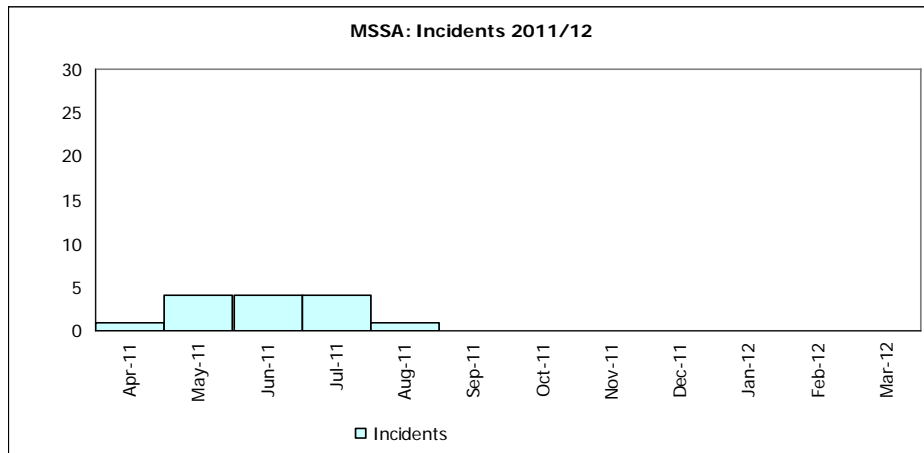
MRSA Bacteraemia

less than 3 post 48-hr, in full year



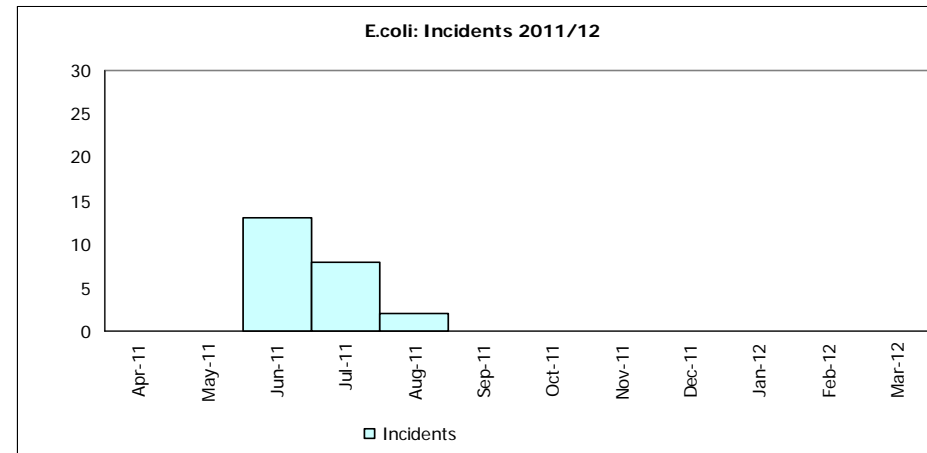
MSSA Bacteraemia

low is good



E.coli Bacteraemia

low is good

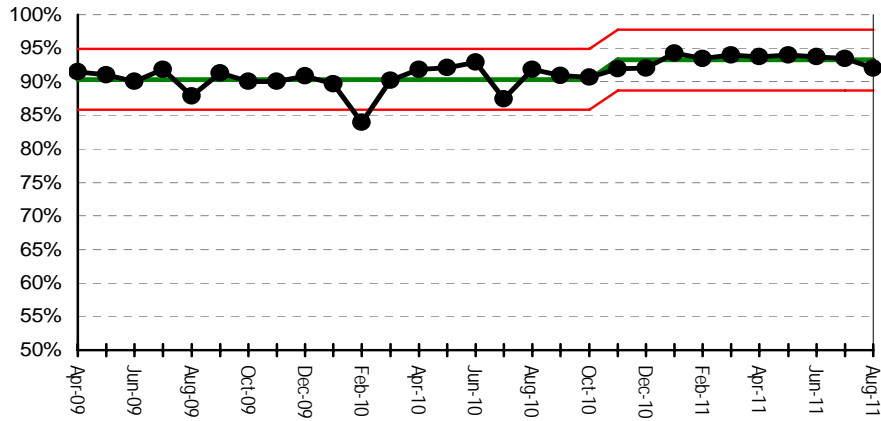


Standard: TBC

MRSA Colonisation Screening compliance (Acute)

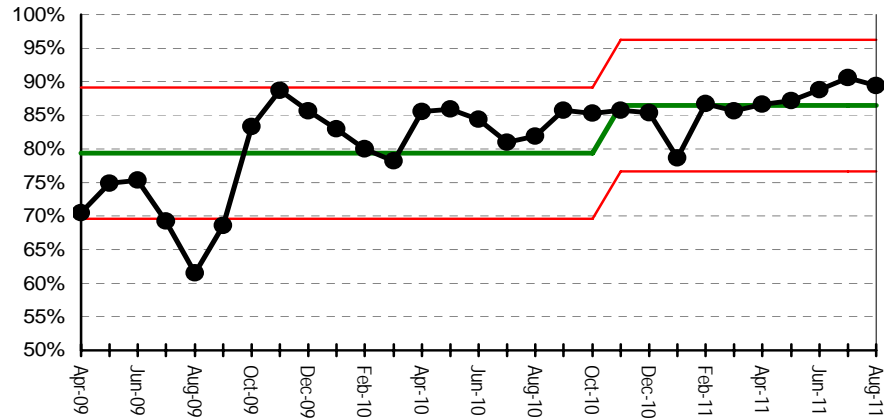
Emergency Patients

high is good



Elective Patients

high is good



Source: PAS and Sunquest ICE

NB Y range starts at 50%

Acute Patient Safety Indicators

Indicator	Observed	Expected	Observed rate/K	Expected rate/K
Deaths in low-risk diagnosis groups*	8	17.6	0.35	0.76
Deaths after surgery	17	15.8	104.29	97.23
Post-operative sepsis	1	2	2.77	5.57

Key (from Dr Foster)

■ the lower end of the 95% confidence interval is above the national average.

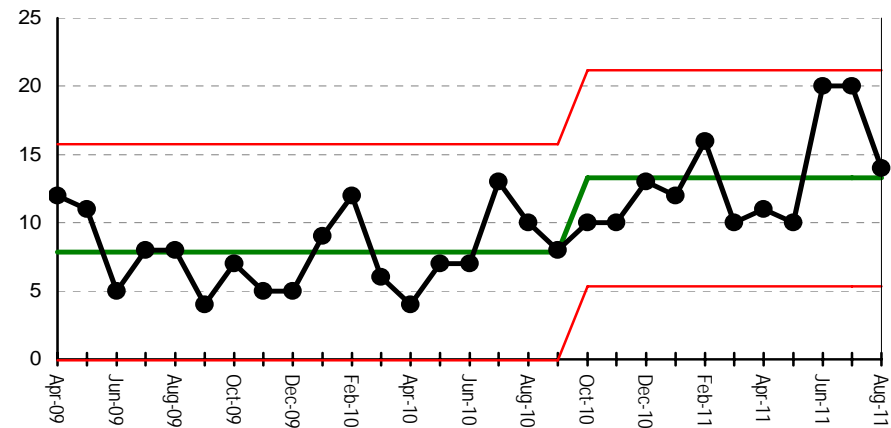
■ the higher end of the 95% confidence interval is below the national average.

■ the relative risk equals the national average value within 95% confidence.

* values are derived from the national average crude rate and are not casemix adjusted.

source: Dr Foster August 10 - July 11

Acute Adverse Incidents

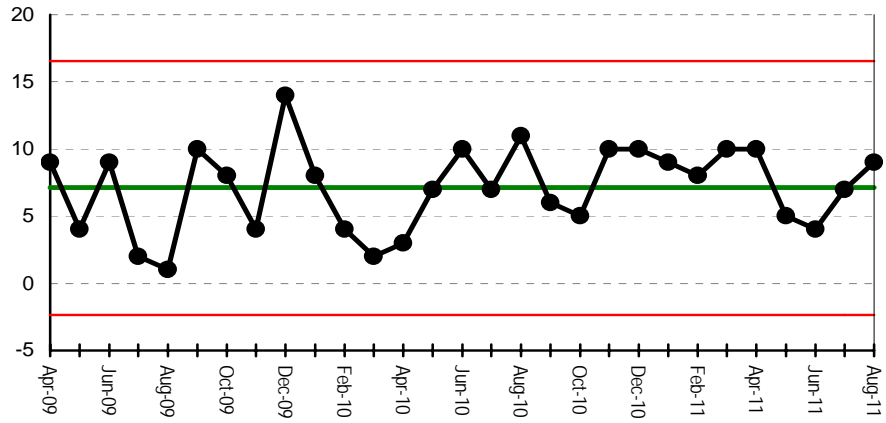


source: pre-July 09: Safeguard, July 09 onwards: Datix

Target: To increase incident reporting to be in the top quartile of national benchmark performance

Moderate & Severe Incidents and Death Indicators

Haringey



Islington

