

Never Events

No never events reported year to date

Source: Datix

Standard: None in year

Definitions: NPSA

CQUIN: Commissioning for Quality & Innovation

The 2011/12 Service Level Agreement has a number CQUIN schemes. A summary of the schemes is provided below.

Acute

CQUIN	Comment
VTE	See figures below
Patient Experience	Figures available at the end of the year
Enhanced Recovery Programme	Data to follow
COPD and Smoking Cessation	Data to follow
Discharge Planning	Data to follow
Out of ICU Cardiac Arrests	See figures below

Community

CQUIN	Comment
VTE	Data to follow
Care Closer to Home	Data to follow
Long Term Conditions	Data to follow

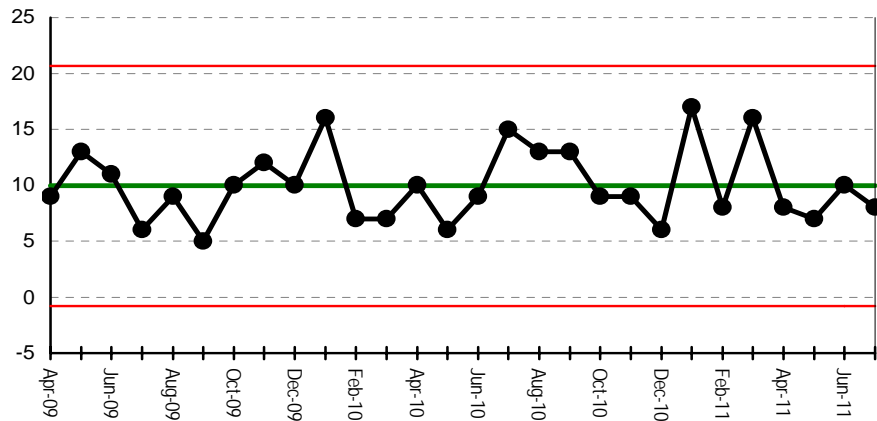
VTE (Acute)

a) Risk assessment completed on admission. Standard: 90%

Jul 11 - 90.38%; YTD - 90.64%

b) Appropriate prophylaxis: Baseline to be confirmed

Number of VTE admissions



Based on primary diagnosis of DVT or PE

Source: UNIFY reporting

Out of ICU Cardiac Arrests

a) Number of out of ICU cardiac arrests. Standard <40 in year

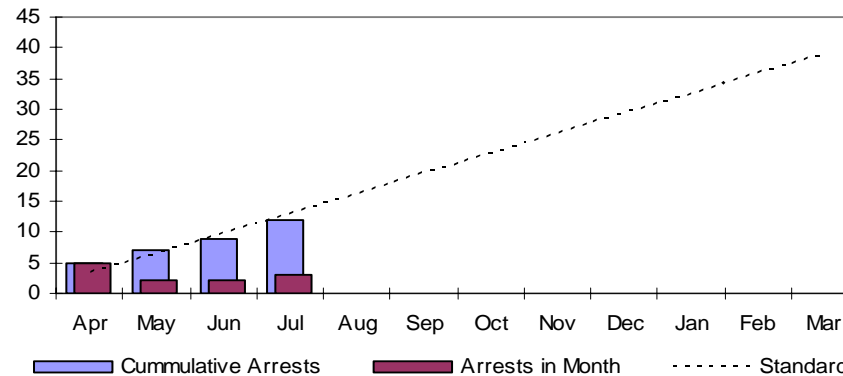
See chart below

b) Completed sets of 6 vital signs:

Q1 baseline - 67% missing at least one of the six vital signs

c) Patients admitted to Critical Care in under 90 mins: Baseline to be confirmed

Number of Out of ICU cardiac arrests



Source: Monthly internal reporting

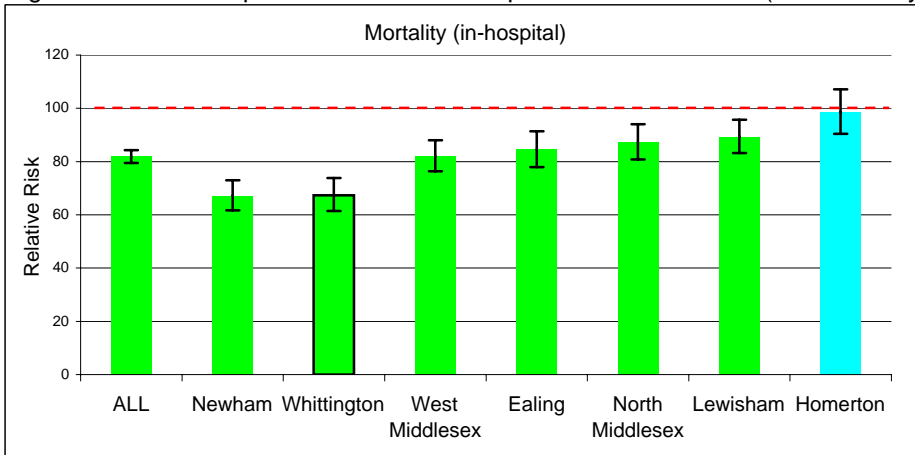
Overall Mortality Rate

Benchmark (Dr Fosters Intelligence/NHS Choices. Standardised Mortality Rate, England)
Standardised on total England data = 100, Jun 2010 - May 2011)

Trust	RR	Trust	RR
Homerton	98.1	King's College	75
Croydon Health	97.1	Epsom and St Heliers	75
Barking, Havering and Redbridge	93.8	Chelsea and Westminster	74
Hillingdon	89.1	Guy's and St Thomas'	71
Lewisham	88.2	Barts and the London	70
North Middlesex	88.2	Whittington	68
Whipps Cross	85.8	Newham	67
Ealing	84.8	Kingston	67
West Middlesex	81.8	University College London	66
South London Healthcare	78.8	St George's Healthcare	66
North West Londons	77	Royal Free Hampstead	65
Barnet and Chase Farm	76.7	Imperial College Healthcare	62

Target to be less than 100

Against a Peer Group of similar London hospitals - last 12 months (Jun 10 - May 11)

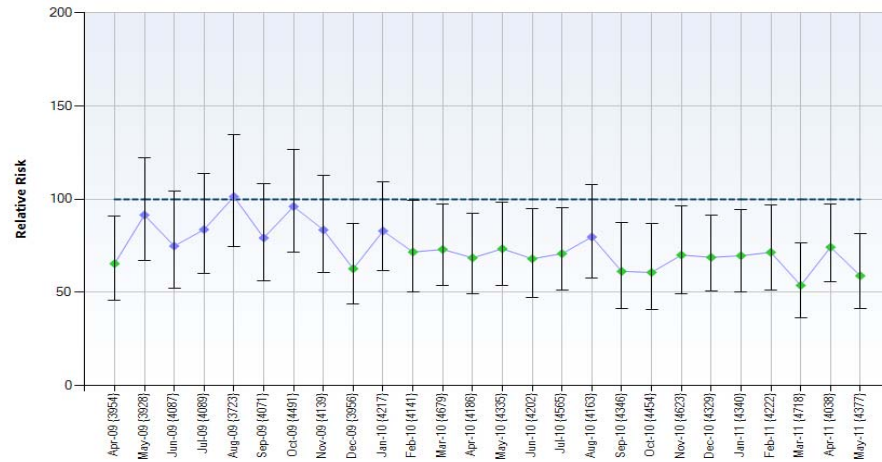


source: Dr Foster

note: refresh of Dr Fosters available for May 2011. Trust data refreshed to July 2011

Mortality Rates over time

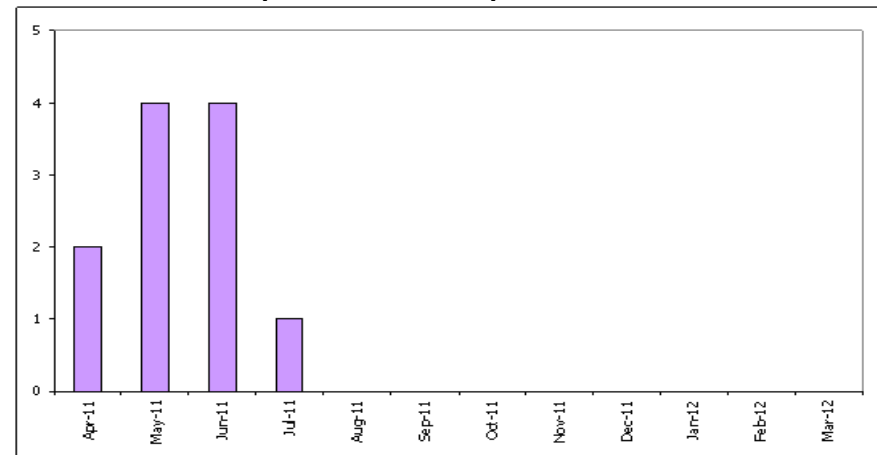
low is good



target: to be Blue/Green rated

Pressure Ulcers (Grades 3 and 4)

low is good



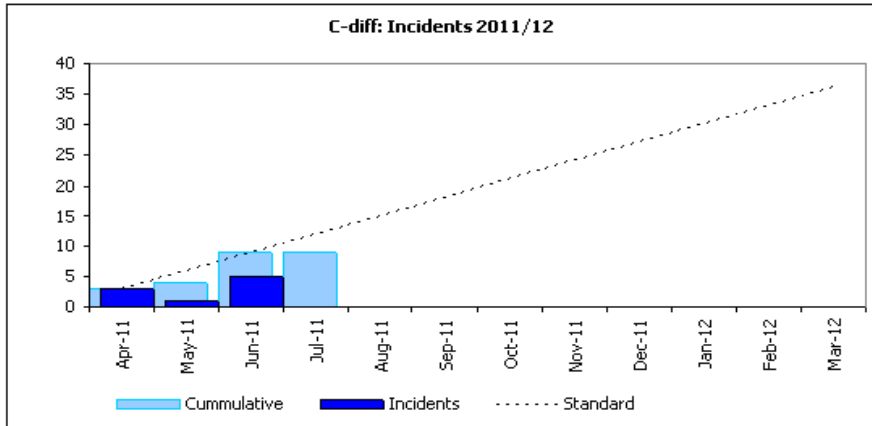
Standard:NHSL patient safety express suggest 50% reduction
(monitoring period to be agreed by the Quality and Safety Board)

Healthcare Acquired Infections

Jun-11

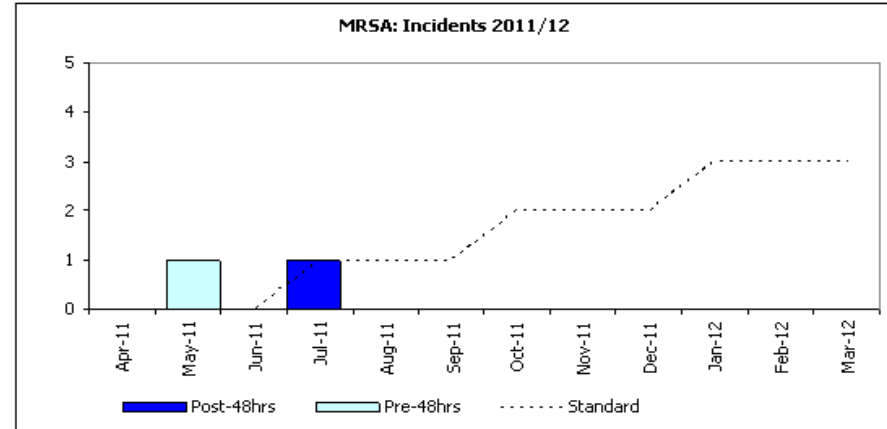
Clostridium difficile

Less than 36 in full year



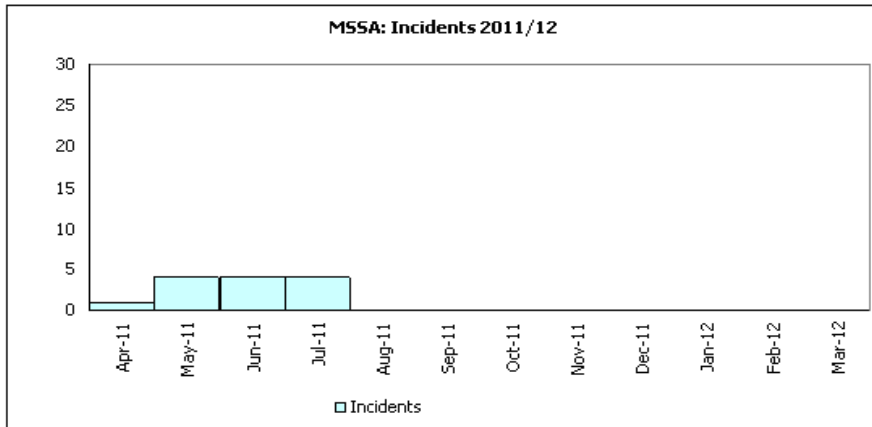
MRSA Bacteraemia

less than 3 post 48-hr, in full year



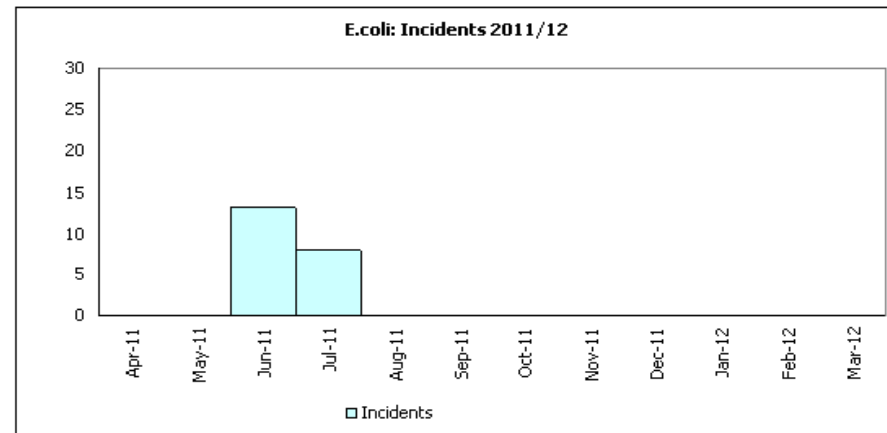
MSSA Bacteraemia

low is good



E.coli Bacteraemia

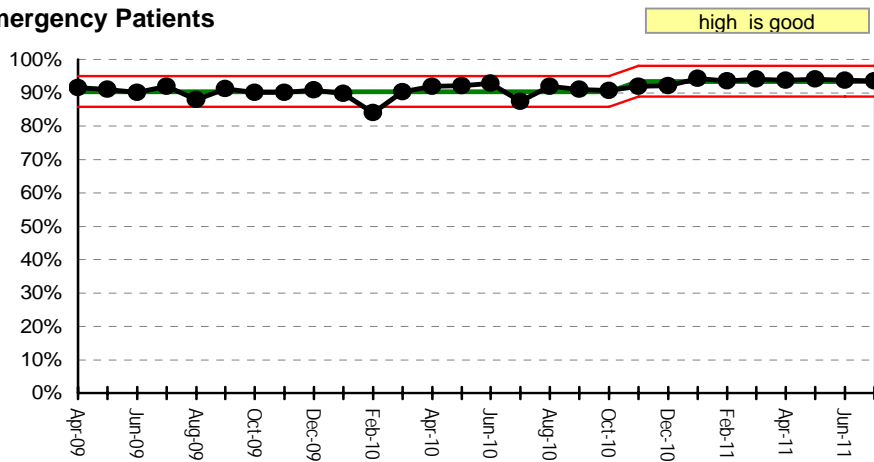
low is good



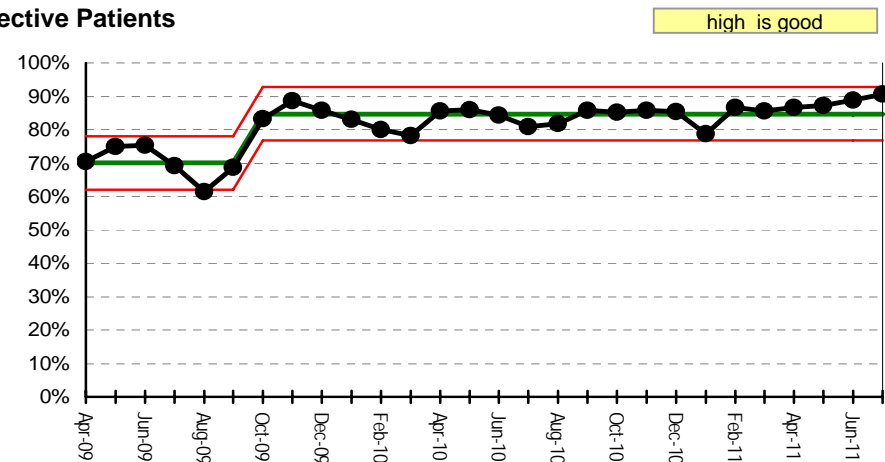
Standard: TBC

MRSA Colonisation Screening compliance (Acute)

Emergency Patients



Elective Patients



Source: PAS and Anglia ICE

Acute Patient Safety Indicators

Indicator	Observed	Expected	Observed rate/K	Expected rate/K
Deaths in low-risk diagnosis groups*	6	18.9	0.26	0.83
Deaths after surgery	16	24.9	94.12	146.29
Post-operative sepsis	3	2.1	7.94	5.59

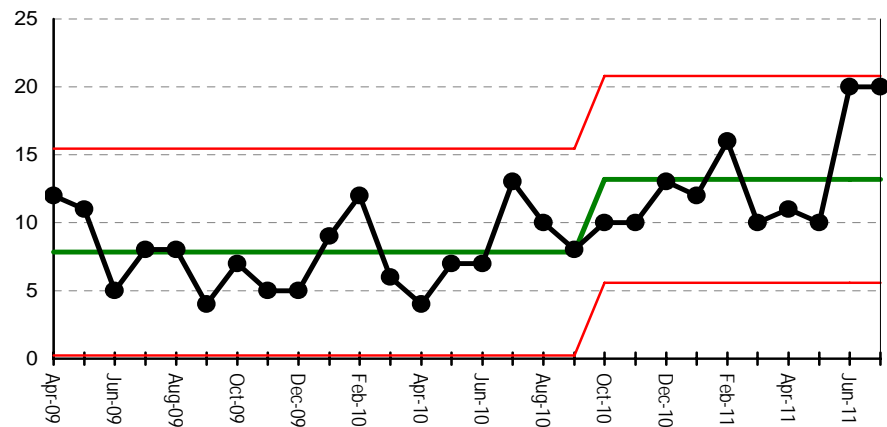
Key (from Dr Foster)

- the lower end of the 95% confidence interval is above the national average.
- the higher end of the 95% confidence interval is below the national average.
- the relative risk equals the national average value within 95% confidence.

* values are derived from the national average crude rate and are not casemix adjusted.

source: Dr Foster June 10 - May 11

Acute Adverse Incidents

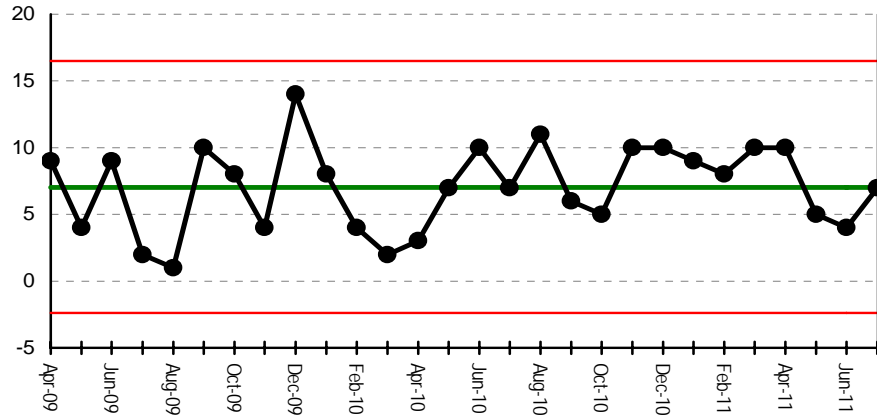


source: pre-July 09: Safeguard, July 09 onwards: Datix

Target: To increase incident reporting to be in the top quartile of national benchmark performance

Moderate & Severe Incidents and Death Indicators

Haringey



Islington

