

CQUIN

Commissioning for Quality & Innovation

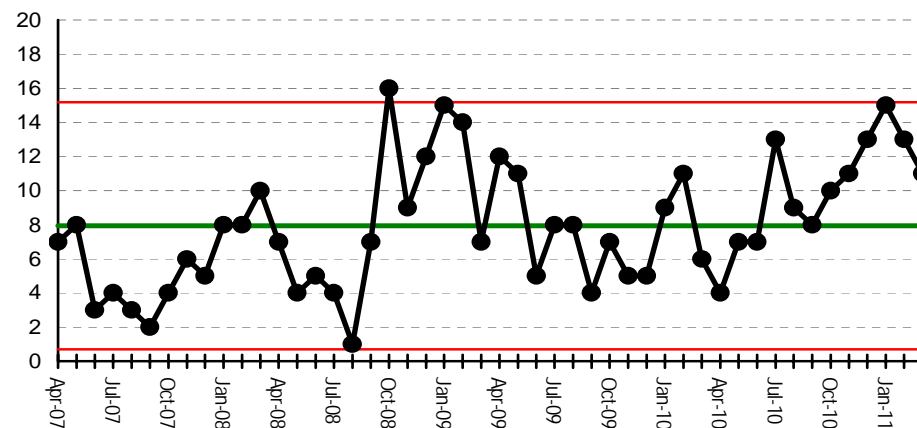
The 2010/11 Service Level Agreement has a number CQUIN schemes.

A summary and assessment of the schemes is provided below. A number of schemes are measured in Quarter 4 only (e.g. national IP patient survey) so have no YTD assessment (= grayed)

CQUIN	Ref	YTD	Forecast	Comment
VTE Assessment	N1			
Patient Experience	N2			
Global Trigger Tool	R1a			
ERP	R1b			
Improving Discharge Information	R2a			
Improving OP Information	R2c			Negotiations re content extended into 2011/12
Improved Discharging	R2b			
Dementia Pathway	R3			
Improved Care for LTC Patients	R4			Readmissions; requires pathway redesign
Hospital SMR	L1a			
Reduce Deaths in LRC	L1b			
SSISS	L1c			
Nutritional Assessment	L2			
Choose and Book	L3			

ERP = Enhanced recovery programme
 LTC = Long-term condition
 LRC = Low-risk condition
 SMR = Standardised mortality ratio
 SSISS = Surgical site infection surveillance service

Adverse Incidents



source: pre-July 09: Safeguard, July 09 onwards: Datix
 Target: To increase incident reporting to be in the top quartile of national benchmark performance

Never Events

The Trust has had no Never Events to date this year

Source Risk Management Department

2010/11 Never Events are :

- Wrong site surgery
- Retained instruments post surgery
- Wrong route chemotherapy
- Misplaced nasogastric or orogastric tube not detected prior to use
- Inpatient death from post-partum haemorrhage after elective caesarean section
- Intravenous administration of potassium chloride

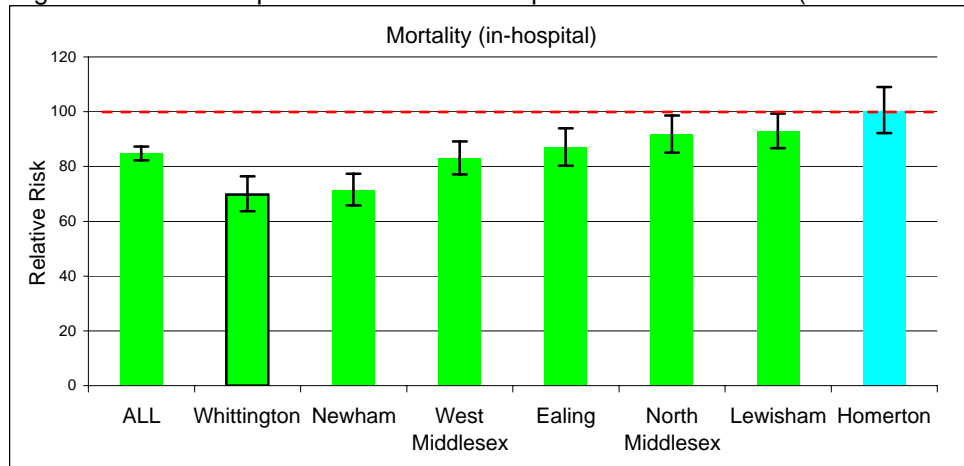
source: NPSA

Benchmark (Dr Fosters Intelligence/NHS Choices. Standardised Mortality Rate, England)
Standardised on total England data = 100, Dec 2009 - Nov 2010)

Trust	RR	Trust	RR
Imperial College Healthcare	62.8	Guy's and St Thomas'	78
University College London	66.2	West Middlesex	83
Royal Free Hampstead	67.9	North West Londons	83
Kingston	69.8	South London Healthcare	86
Whittington	70	Ealing	87
St George's Healthcare	71.1	Whipps Cross	88
Newham	71.5	Hillingdon	89
Barts and the London	72.9	Lewisham	92
Chelsea and Westminster	74.3	North Middlesex	92
Epsom and St Heliers	76.2	Homerton	100
King's College	76.2	Barking, Havering and Redbridge	100
Barnet and Chase Farm	77.2	Croydon Health	103

Target to be less than 100

Against a Peer Group of similar London hospitals - last 12 months (Feb 10 - Jan 11)

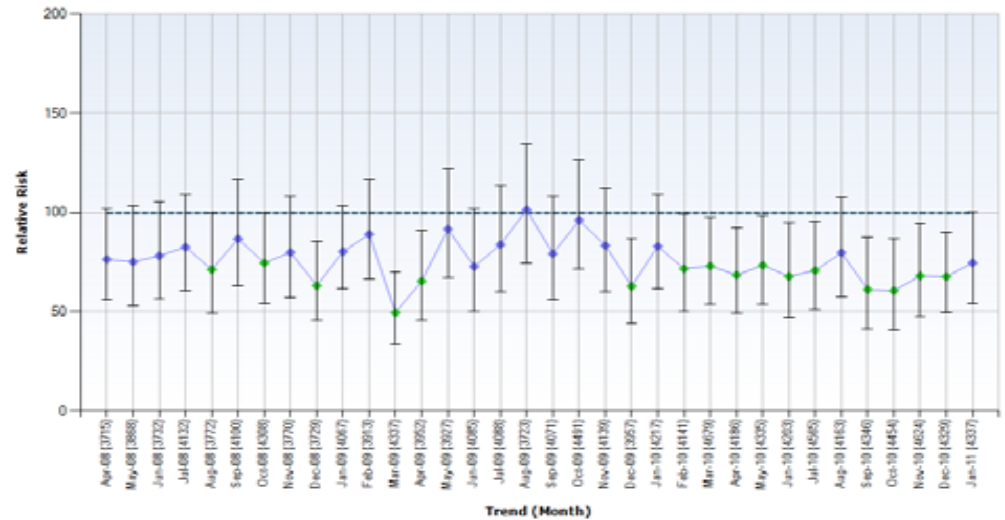


target: to be Blue/Green rated

source: Dr Foster

Mortality Rates over time

low is good



Deaths in low risk conditions

The construction of this indicator is still under discussion between Dr Foster and the Care Quality Commission

The current Dr Foster patient safety indicator is shown below

low is good

In the 12 months to	Volume of cases	rate per 1000 admissions	National rate per 1000 admissions
Apr-10	8	0.37	0.98
May-10	6	0.27	0.98
Jun-10	Not available		
Jul-10	5	0.23	0.84
Aug-10	5	0.22	0.84
Sep-10	5	0.22	0.84
Oct-10	4	0.18	0.84
Nov-10	5	0.22	0.84
Dec-10	5	0.22	0.84

Notes

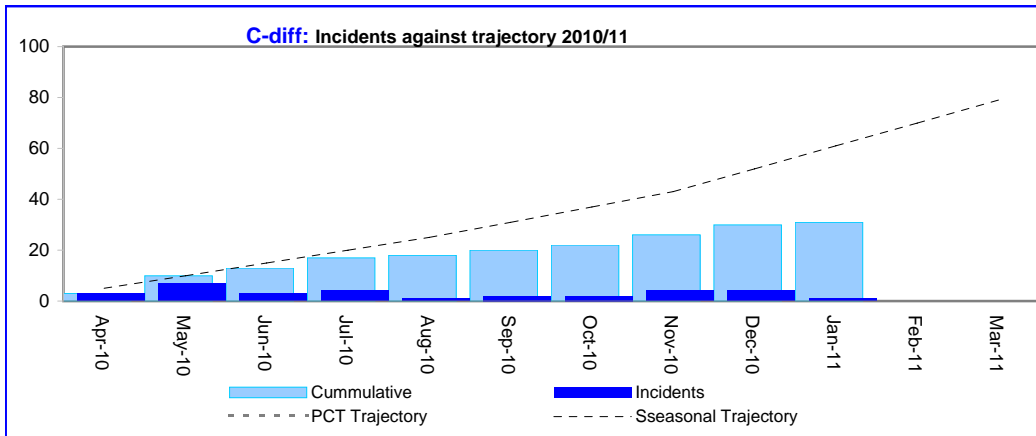
1. Calculated on a rolling 12 months basis (2 months in arrears)
2. All cases are investigated by a senior clinician
3. Trend data not currently available

Healthcare Acquired Infections

Contains September data on a month to date basis

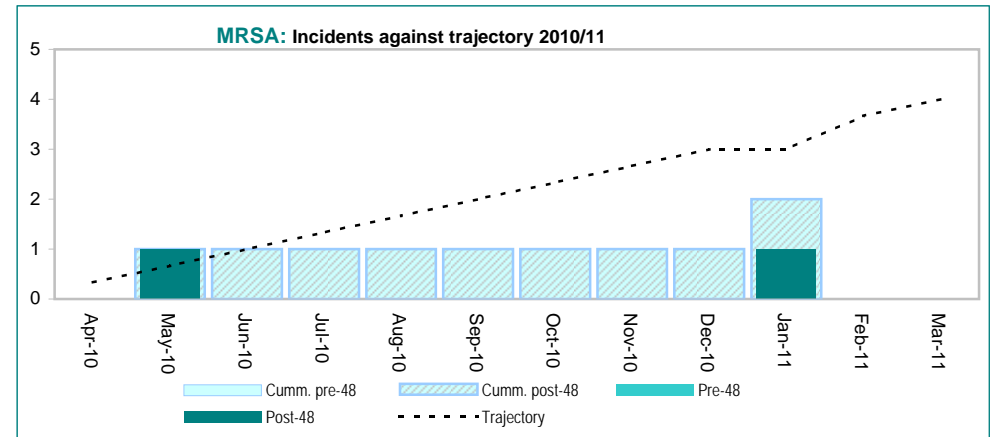
Clostridium difficile

low is good



MRSA

low is good

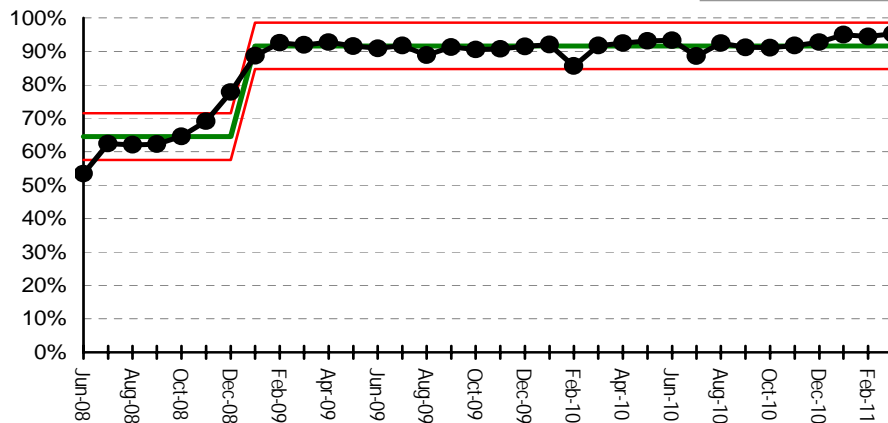


MRSA Screening compliance

* Data for January is not yet available

Emergency Patients

high is good



Elective Patients

high is good

