

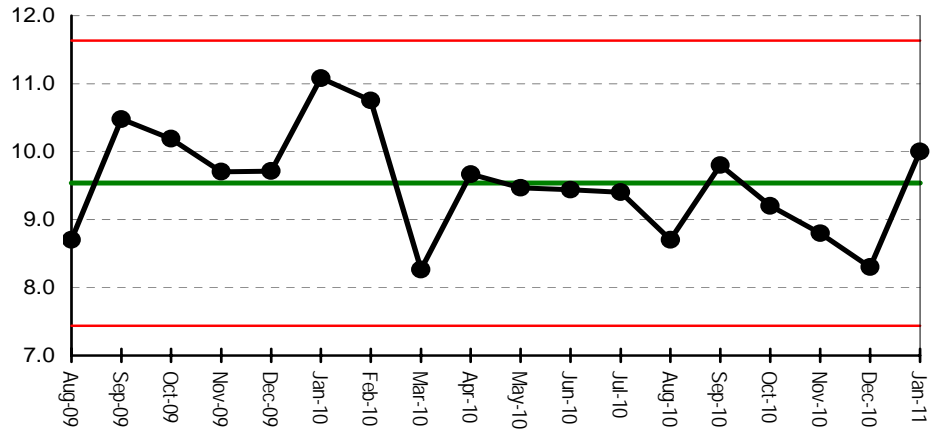
18 weeks Referral to Treatment (RTT) indicators

18 weeks data is updated to January

Median Wait for treatment (weeks)

Admitted patients

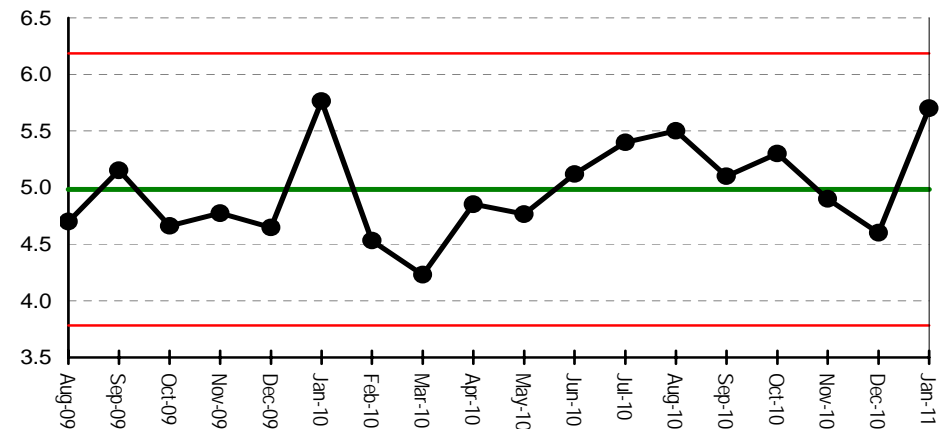
low is good



Source: Monthly 18 week report

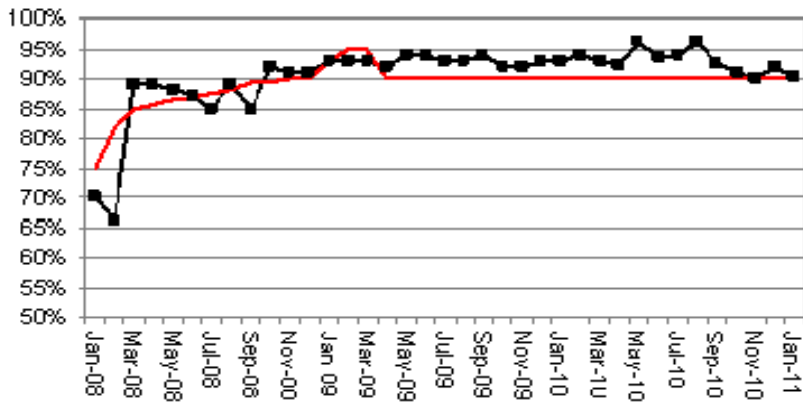
Non-admitted patients

low is good



Patients treated within 18 weeks (%)

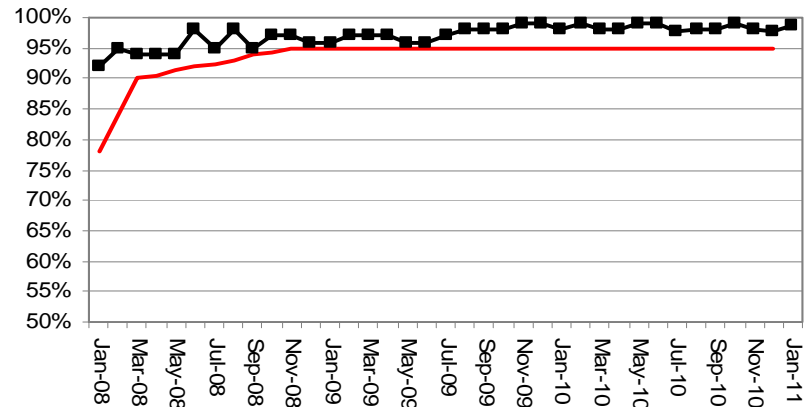
Admitted patients



Standard: 90%

Source: Monthly 18 week report

Non-admitted patients



Standard: 95%

Outpatient indicators

Consultant to consultant referrals

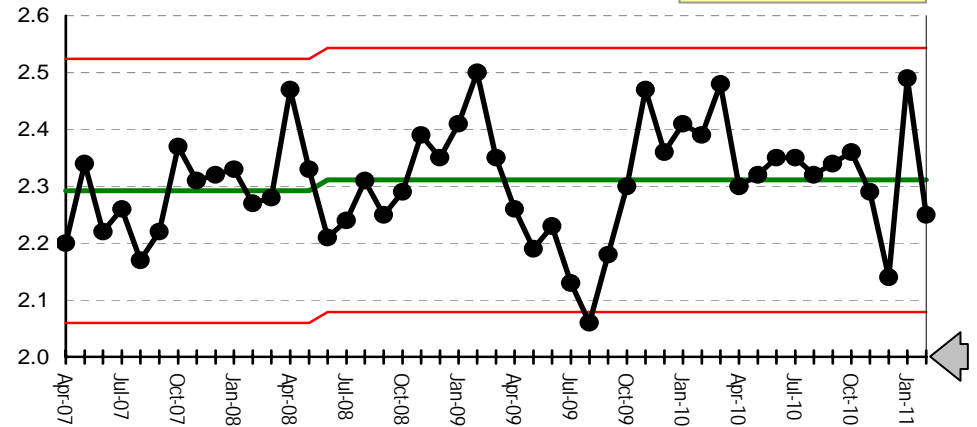
Definition to be agreed and in line with contract agreement

low is good

Source: PAS data  
Standard: TBA

Outpatient follow-up ratio

down to target is good

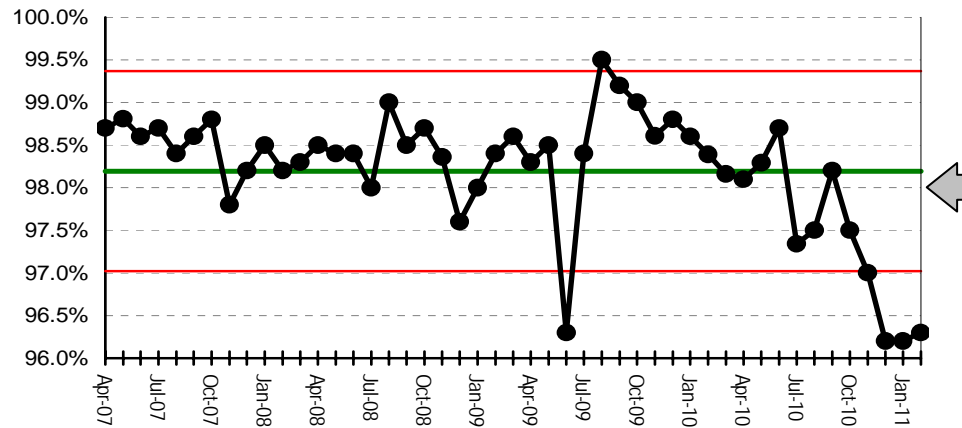


Source: PAS data  
Standard: 2:1. The SLA target is different in each specialty this represents an amalgamated target

ED waits indicators

Percentage of attenders treated within 4 hours

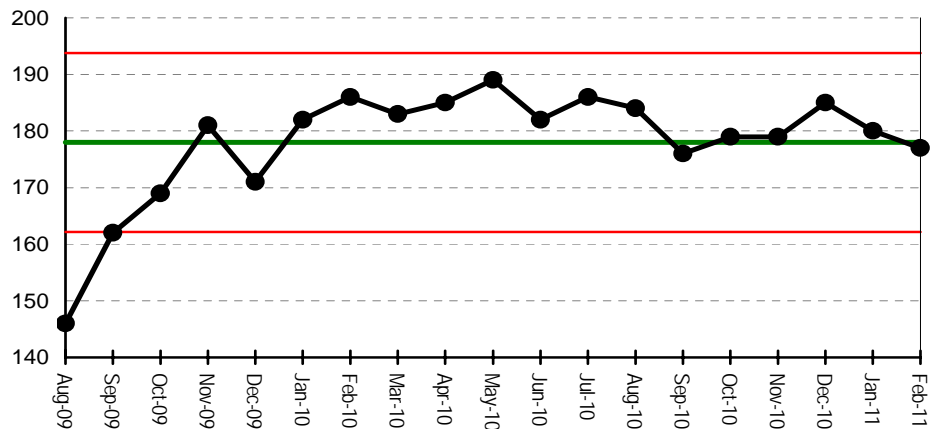
High is good



Source: EDIS data  
Standard: 95% of ED attenders to be discharged within 4 hours (NHS L set target at 98% for London trusts)

Median wait (minutes)

low is good



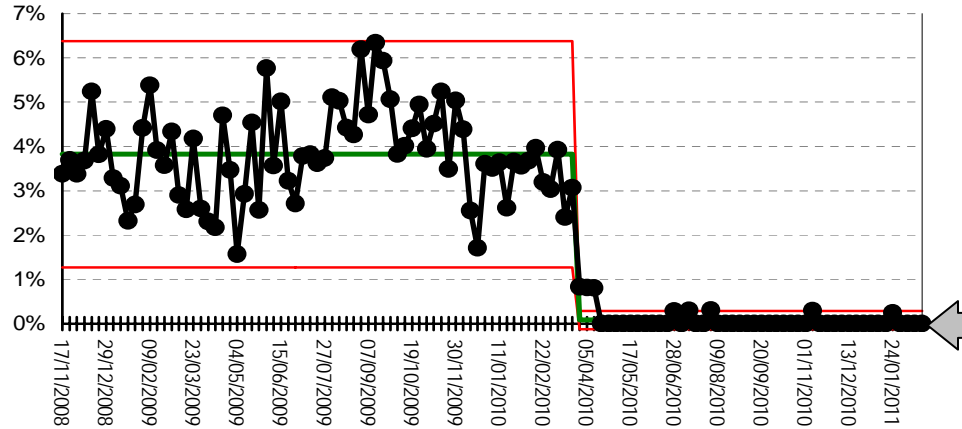
Source: EDIS data  
Standard 120 minutes

Admitted Patient indicators

Single sex accommodation

low is good

Total single sex breach days as a percentage of occupied bed days in week.

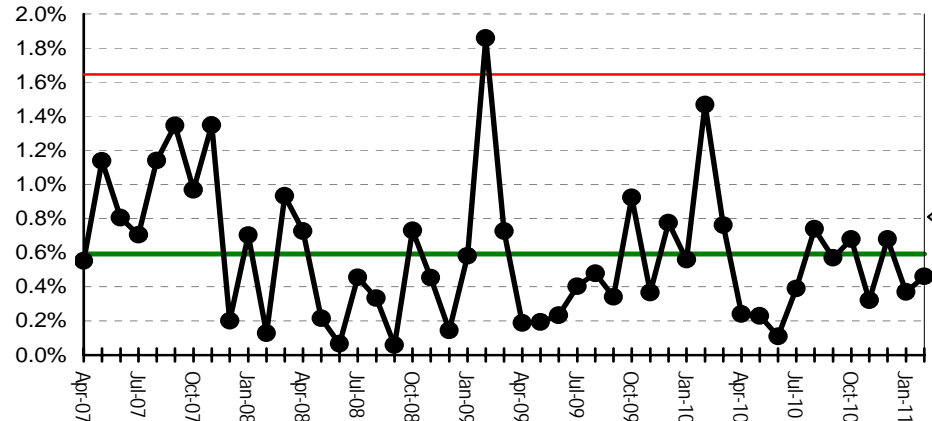


Source: Daily monitoring by bed managers

Standard: Zero breaches in admitted patient areas other than clinically justified as per national definitions

Cancelled Operations for non-clinical reasons

low is good



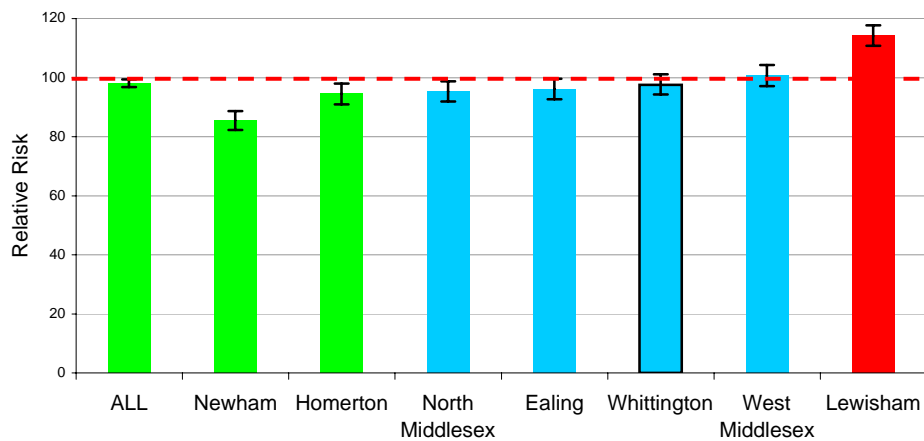
Source: PAS data

Standard: <0.8% of operations cancelled for non-clinical reasons (National tolerance)

Readmissions within 28 days (relative risk)

Against a Peer Group of similar London hospitals - last 12 months

low is good

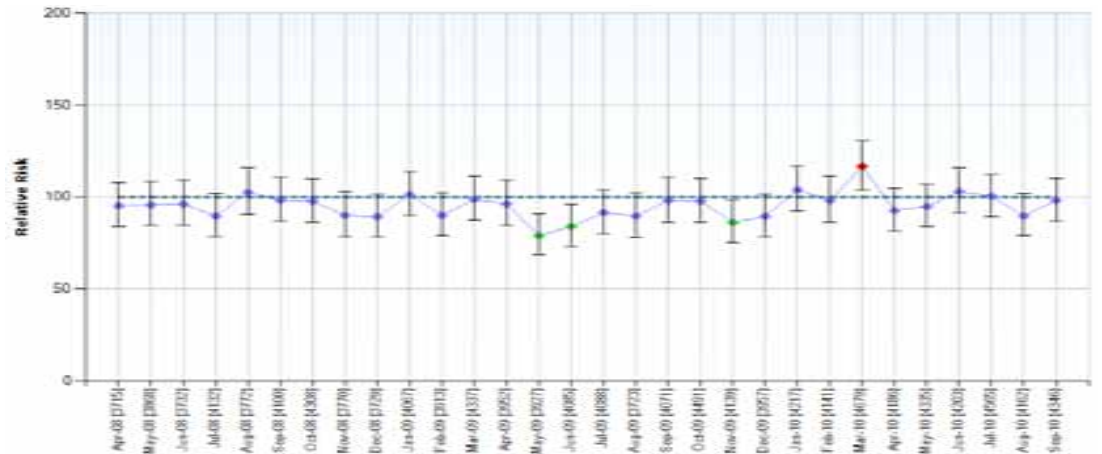


Source: Dr Fosters - three month lag in data

Standard: to be Blue/Green rated

Benchmark - trend over time (standardised against national data)

low is good



Source: Dr Foster Intelligence. Relative Risk = index. Benchmark Year=2007/08

Standard: to be Blue/Green rated



## Other Key Targets

Data is to February 2011 unless otherwise noted

	Criteria	Standard	Month	YTD	Forecast	
<b>Reducing Mortality from Cancer</b>			(Jan Data)	(Apr-Jan)		Data source: <i>CWT dataset</i>
Wait from urg GP referral until seen	14 days	93%	96.4%	93.8%		
Wait from symptomatic breast referral until seen	14 days	93%	93.5%	93.1%		
Wait from Decision to Treat until 1st Treatment	31 days	96%	95.8%	99.2%		
Wait from Decision to treat until 2nd Treatment	31 days	96%	100%	100%		
Wait from GP Urgent Referral until Treatment	62 days	85%	83.3%	85.5%		
Wait from Consultant upgrade until Treatment	62 days	TBC	100%	95.1%		
Wait from Screening Referral until Treatment	62 days	90%	N/A	100%		
<b>Patient right of redress following cancelled operations</b>						Data source: <i>PAS data</i>
% operations cancelled for non-clinical reasons	Elective	<0.8%	0.46%	0.43%		
% offers of new binding date within 28 days	Elective	95%	100%	100%		
<b>Delayed transfers of care</b>						Data source: <i>DTOCs database</i>
Number of delayed bed-days			163	1266	1,381	
% delayed patients as a % of all patients		<=3.5%	2.4%	1.4%		
<b>Reducing Mortality from Heart Disease</b>						Data source: <i>PAS data</i>
Wait from GP Referral until Seen in RACP Clinic	14 days	>98%	100%	100%		
<b>Emergency bed-days</b>						Data source: <i>PAS data</i>
Number of emergency bed-days		7500/m	7,524	83,875		
% Change from last year			13%	6%		
<b>Maternity indicators</b>			(Jan Data*)	(Apr-Dec*)		Data Source: <i>Maternity Matters Assurance Reporting</i>
Maternity bookings within 12 weeks 6 days	% bookings	90%	79%	75%		For referrals received within 12 weeks only.
1:1 midwifery care in established labour (bi-monthly)		TBA	99%	97%		*1:1 care data collected in bi-monthly staff audits, most recent Jan 10
<b>Reducing inequalities in Infant Mortality</b>						Data source: <i>PAS/Badger data</i>
Smoking in pregnancy at time of delivery	% deliveries	<17%	8%	9%		
Rate of Breastfeeding at birth	% deliveries	78%	86%	89%		
<b>Diagnostic waits</b>			(Jan Data)	(Apr-Jan)		Data source: <i>DM01 Central Return</i>
Patients waiting from referral until seen	6 weeks		100%	99.9%		
<b>NHS number completeness</b>				(Apr-Dec)		Data source: <i>SUS (IC Data Quality dashboard)</i>
% Admissions with valid NHS number		98.3%		93.5%		Standard: National average
% Outpatient Attendances with valid NHS number		98.4%		96.2%		Standard: National average
% ED Attendances with valid NHS number		91.4%		79.4%		Standard: National average
<b>HRG ungrouped activity</b>				(Apr-Dec)		Data source: <i>SUS (IC Data Quality dashboard)</i>
% Inpatient Discharges without HRG 4 code		100%		99.9%		Standard: Internal target
% ED Attendances without HRG 3.2 code		100%		99.9%		Standard: Internal target
<b>LAS Ambulance - A&amp;E handover</b>						Data source: <i>LAS monthly report</i>
% ambulance arrivals handed over within 15 mins	TBA	TBA				Data definition TBA

---

---