

CQUIN

Commissioning for Quality & Innovation

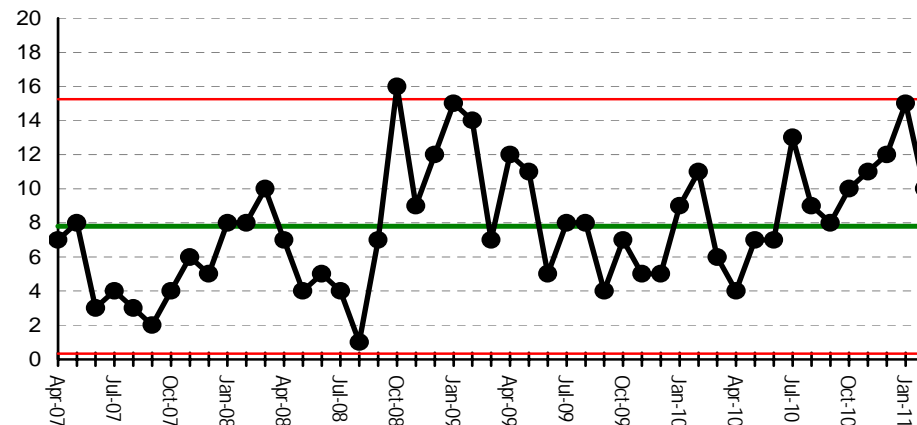
The 2010/11 Service Level Agreement has a number CQUIN schemes.

A summary and assessment of the schemes is provided below. A number of schemes are measured in Quarter 4 only (e.g. national IP patient survey) so have no YTD assessment (= grayed)

CQUIN	Ref	YTD	Forecast	Comment
VTE Assessment	N1			March 2011 target = 90%
Patient Experience	N2			High uncertainty
Global Trigger Tool	R1a			
ERP	R1b			
Improving Discharge Information	R2a			
Improving OP Information	R2c			
Improved Discharging	R2b			
Dementia Pathway	R3			
Improved Care for LTC Patients	R4			Readmissions; requires pathway redesign
Hospital SMR	L1a			
Reduce Deaths in LRC	L1b			
SSISS	L1c			
Nutritional Assessment	L2			
Choose and Book	L3			March 2011 target = 98% slot availability

- ERP = Enhanced recovery programme
- LTC = Long-term condition
- LRC = Low-risk condition
- SMR = Standardised mortality ratio
- SSISS = Surgical site infection surveillance service

Adverse Incidents



source: pre-July 09: Safeguard, July 09 onwards: Datix

Target: To increase incident reporting to be in the top quartile of national benchmark performance

Never Events

The Trust has had no Never Events to date this year

Source Risk Management Department

- Never Events are :
- Wrong site surgery
 - Retained instruments post surgery
 - Wrong route chemotherapy
 - Misplaced nasogastric or orogastric tube not detected prior to use
 - Inpatient death from post-partum haemorrhage after elective caesarean section
 - Intravenous administration of potassium chloride

source: NPSA

Overall Mortality Rate

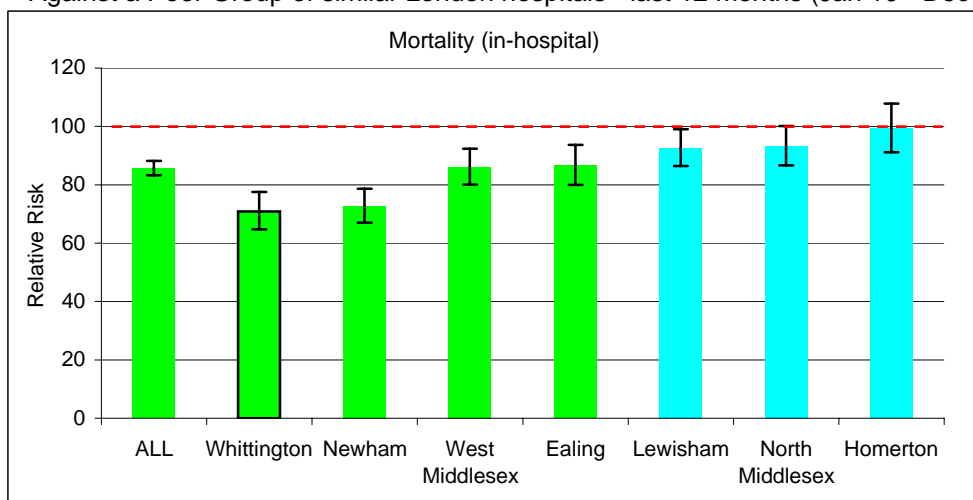
Benchmark (Dr Fosters Intelligence/NHS Choices. Standardised Mortality Rate, England)

Standardised on total England data = 100, Dec 2009 - Nov 2010)

Trust	RR	Trust	RR
Imperial College Healthcare	64.2	King's College	79
Royal Free Hampstead	67.3	North West Londons	85
University College London	68.8	West Middlesex	86
Whittington	71	Ealing	87
Kingston	72.6	South London Healthcare	88
Newham	72.9	Whipps Cross	88
St George's Healthcare	73	Hillingdon	89
Barts and the London	75.7	Lewisham	92
Barnet and Chase Farm	77.1	North Middlesex	94
Chelsea and Westminster	77.2	Homerton	99
Guy's and St Thomas'	77.6	Barking, Havering and Redbridge	103
Epsom and St Heliers	78.4	Croydon Health	106

Target to be less than 100

Against a Peer Group of similar London hospitals - last 12 months (Jan 10 - Dec 10)



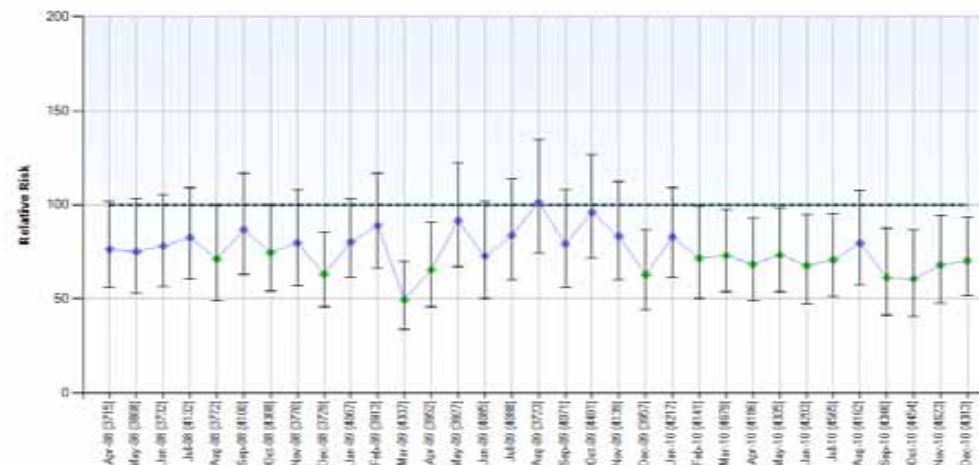
target: to be Blue/Green rated

source: Dr Foster

note: refresh of Dr Fosters available for Dec 2010. Trust data refreshed to Feb 2011

Mortality Rates over time

low is good



target: to be Blue/Green rated

Deaths in low risk conditions

The construction of this indicator is still under discussion between Dr Foster and the Care Quality Commission

low is good

The current Dr Foster patient safety indicator is shown below

In the 12 months to	Volume of cases	rate per 1000 admissions	National rate per 1000 admissions
Apr-10	8	0.37	0.98
May-10	6	0.27	0.98
Jun-10	Not available		
Jul-10	5	0.23	0.84
Aug-10	5	0.22	0.84
Sep-10	5	0.22	0.84
Oct-10	4	0.18	0.84
Nov-10	5	0.22	0.84
Dec-10	5	0.22	0.84

Notes

1. Calculated on a rolling 12 months basis (2 months in arrears)
2. All cases are investigated by a senior clinician
3. Trend data not currently available

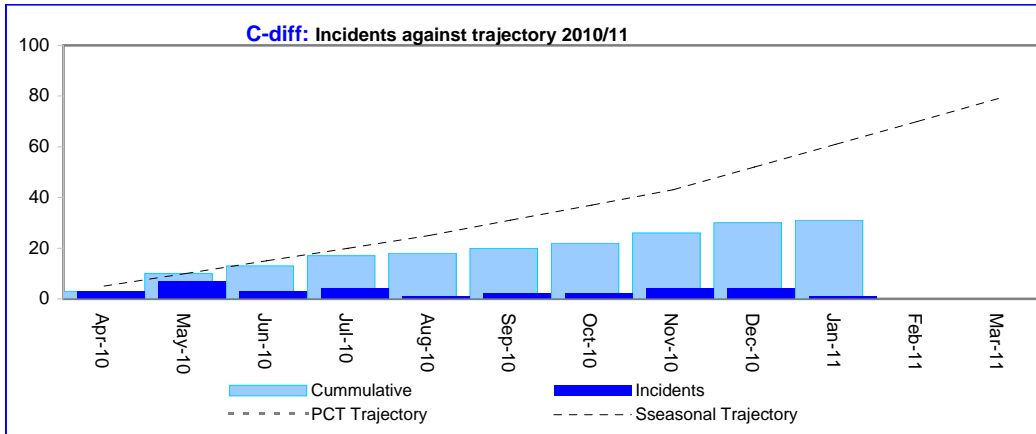
Healthcare Acquired Infections

Contains September data on a month to date basis

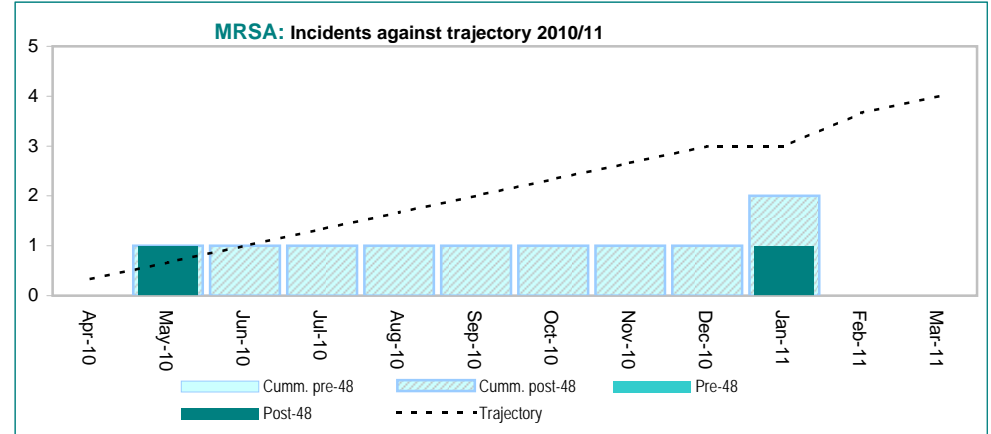
low is good

Clostridium difficile

low is good



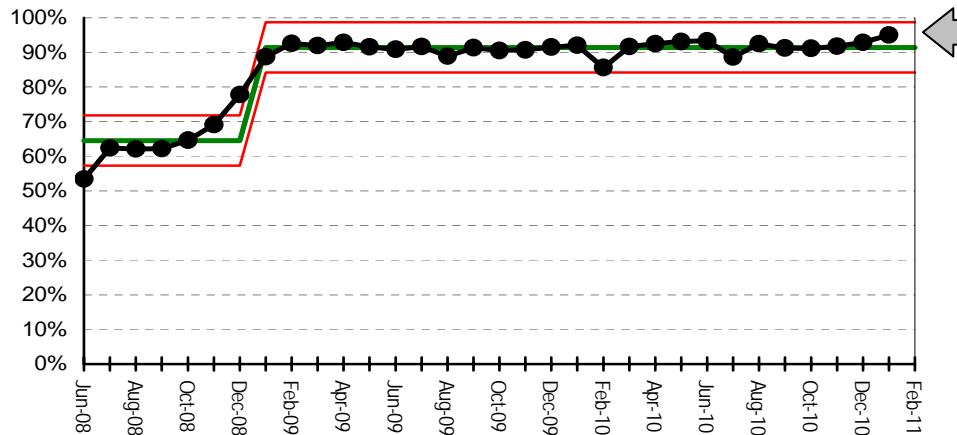
MRSA



MRSA Screening compliance

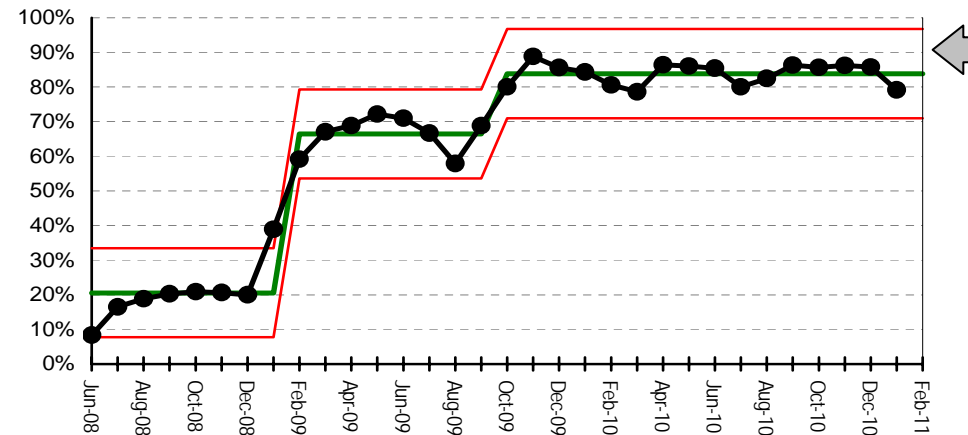
Emergency Patients

high is good



Elective Patients

high is good



Source: PAS and Anglia ICE

Data now includes day case screening performance