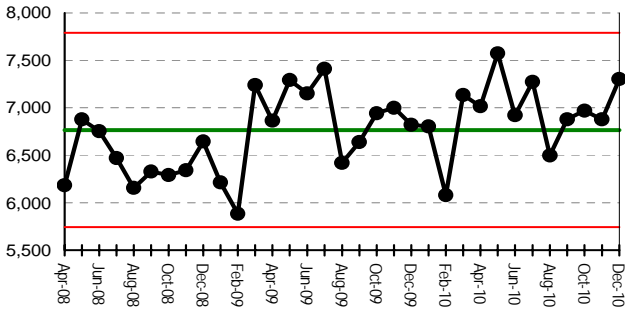
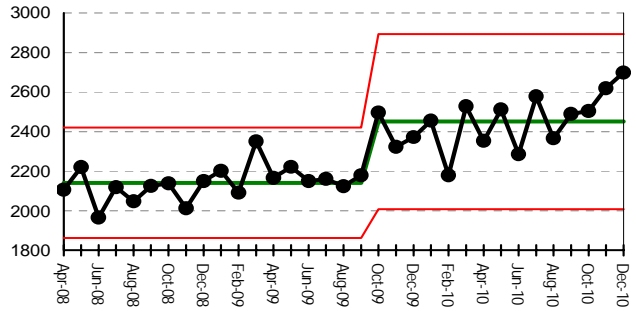


Activity type	2008/09	2009/10	2010/11 YTD	2010/11 FOT
ED attendances	77,460	82,622	63,317	84,423
Non Elective IP	25,524	27,352	22,401	29,868
OP First Attendances	71,601	74,475	56,279	75,039
Elective IP	2,789	2,849	2,089	2,785
Day Case	16,957	17,324	13,520	18,027

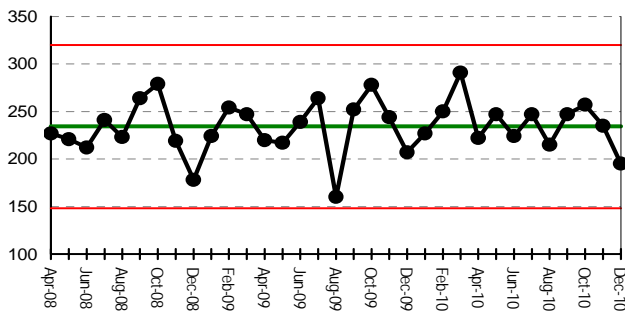
ED Attendances



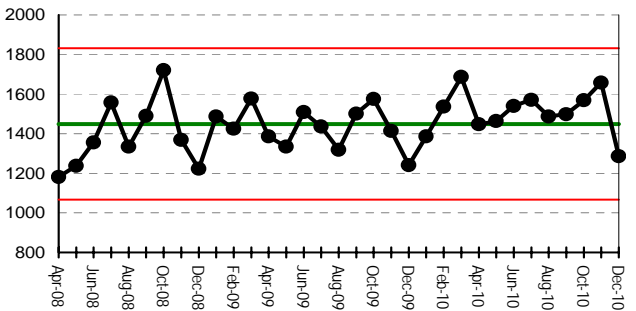
Non-Elective IP



Elective IP



Day Cases



OP First attendances

