

**CQUIN**

Commissioning for Quality & Innovation

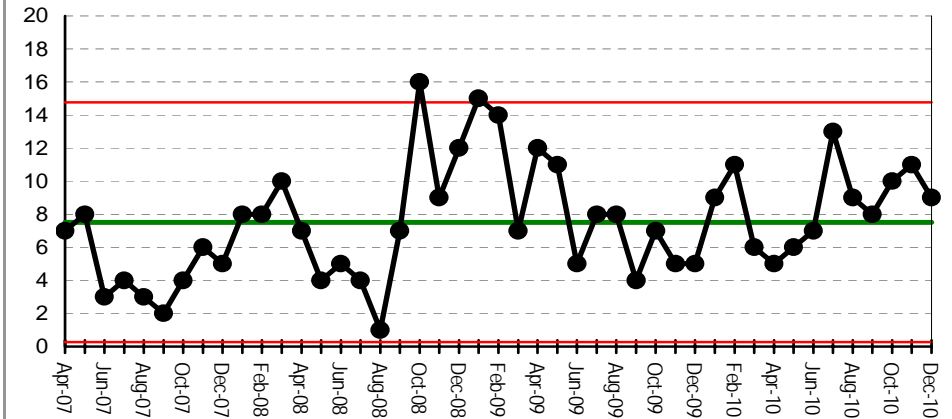
The 2010/11 Service Level Agreement has a number CQUIN schemes.

A summary and assessment of the schemes is provided below. A number of schemes are measured in Quarter 4 only (e.g. national IP patient survey) so have no YTD assessment (= grayed)

CQUIN	Ref	YTD	Forecast	Comment
VTE Assessment	N1			March 2011 target = 90%
Patient Experience	N2			National Survey underway; high uncertainty
Global Trigger Tool	R1a			
ERP	R1b			
Improving Discharge Information	R2a			
Improving OP Information	R2c			Negotiating content with commissioners/GPs
Improved Discharging	R2b			
Dementia Pathway	R3			
Improved Care for LTC Patients	R4			Readmissions; requires pathway redesign
Hospital SMR	L1a			
Reduce Deaths in LRC	L1b			
SSISS	L1c			Recruitment complete and data capture underway
Nutritional Assessment	L2			
Choose and Book	L3			March 2011 target = 98% slot availability

- ERP = Enhanced recovery programme
- LTC = Long-term condition
- LRC = Low-risk condition
- SMR = Standardised mortality ratio
- SSISS = Surgical site infection surveillance service

**Adverse Incidents**



source: pre-July 09: Safeguard, July 09 onwards: Datix

Target: To increase incident reporting to be in the top quartile of national benchmark performance

**Never Events**

The Trust has had no Never Events to date this year

Source Risk Management Department

- Never Events are :
- Wrong site surgery
- Retained instruments post surgery
- Wrong route chemotherapy
- Misplaced nasogastric or orogastric tube not detected prior to use
- Inpatient death from post-partum haemorrhage after elective caesarean section
- Intravenous administration of potassium chloride

source: NPSA

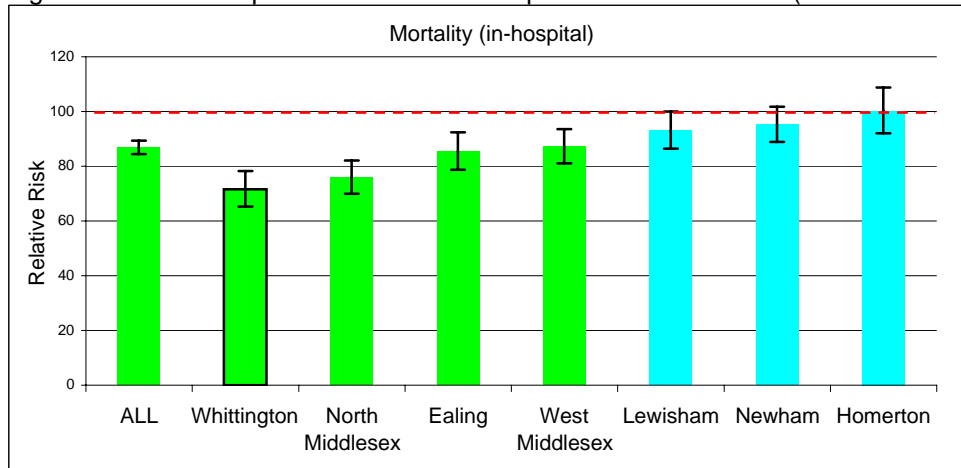
**Overall Mortality Rate**

**Benchmark** (Dr Fosters Intelligence/NHS Choices. Standardised Mortality Rate, England)  
Standardised on total England data = 100, Nov 2009 - Oct 2010)

Trust	RR	Trust	RR
Royal Free Hampstead	65.3	Chelsea and Westminster	83
Imperial College Healthcare	67.5	Ealing	86
University College London	69.7	North West Londons	86
Whittington	71.4	West Middlesex	87
Newham	76	Hillingdon	90
St George's Healthcare	76.7	South London Healthcare	92
Barnet and Chase Farm	77.3	North Middlesex	94
Kingston	78.2	Lewisham	95
Epsom and St Heliers	78.8	Whipps Cross	95
Barts and the London	80.3	Homerton	100
Guy's and St Thomas'	81.8	Mayday Healthcare	105
King's College	82.6	Barking, Havering and Redbridge	107

Target to be less than 100

Against a Peer Group of similar London hospitals - last 12 months (Nov 09 - Oct 10)



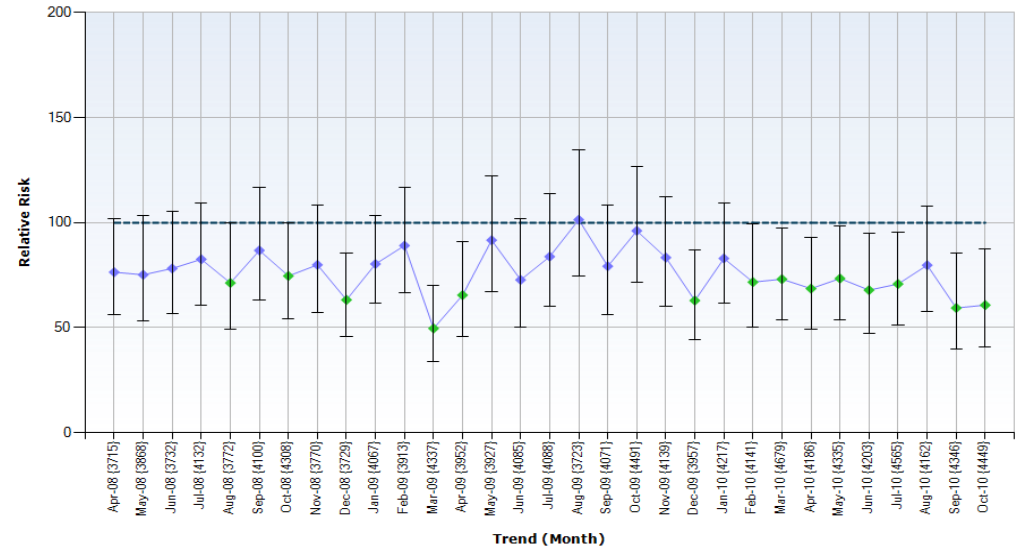
target: to be Blue/Green rated

source: Dr Foster

note: refresh of Dr Fosters available for Oct 2010. Trust data refreshed to Dec 2010

**Mortality Rates over time**

low is good



**Deaths in low risk conditions**

The construction of this indicator is still under discussion between Dr Foster and the Care Quality Commission

low is good

The current Dr Foster patient safety indicator is shown below

In the 12 months to	Volume of cases	rate per 1000 admissions	National rate per 1000 admissions
Apr-10	8	0.37	0.98
May-10	6	0.27	0.98
Jun-10	Not available		
Jul-10	5	0.23	0.84
Aug-10	5	0.22	0.84
Sep-10	5	0.22	0.84
Oct-10	4	0.18	0.84

Notes

1. Calculated on a rolling 12 months basis (2 months in arrears)
2. All cases are investigated by a senior clinician
3. Trend data not currently available

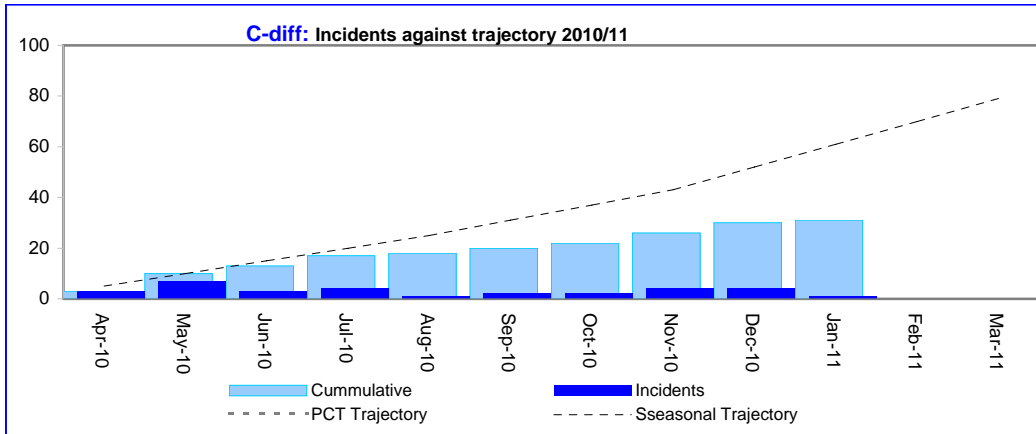
Healthcare Acquired Infections

Contains September data on a month to date basis

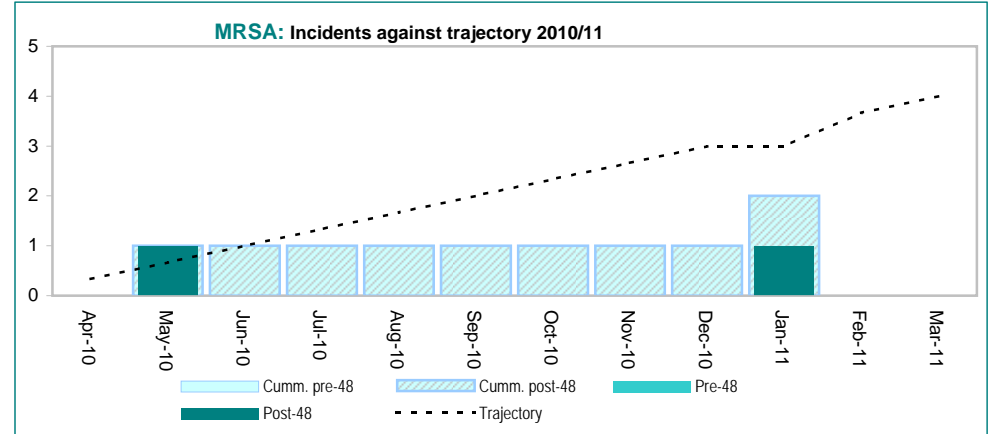
low is good

Clostridium difficile

low is good



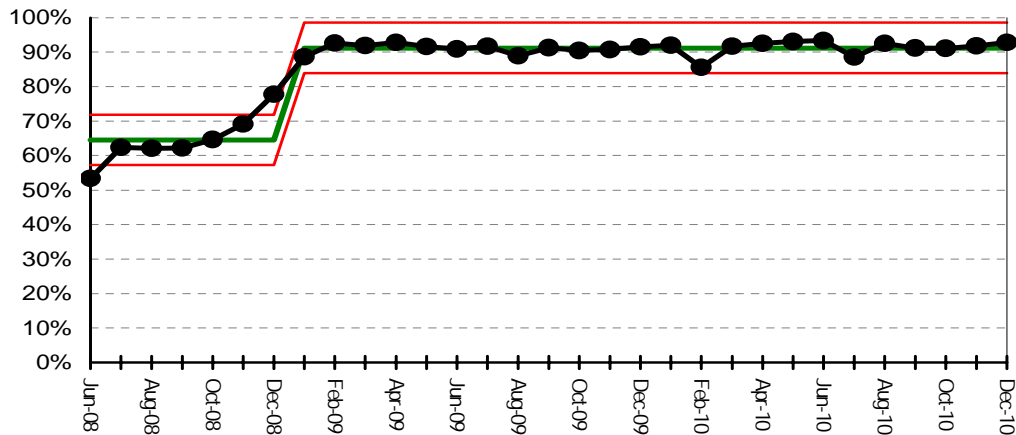
MRSA



MRSA Screening compliance

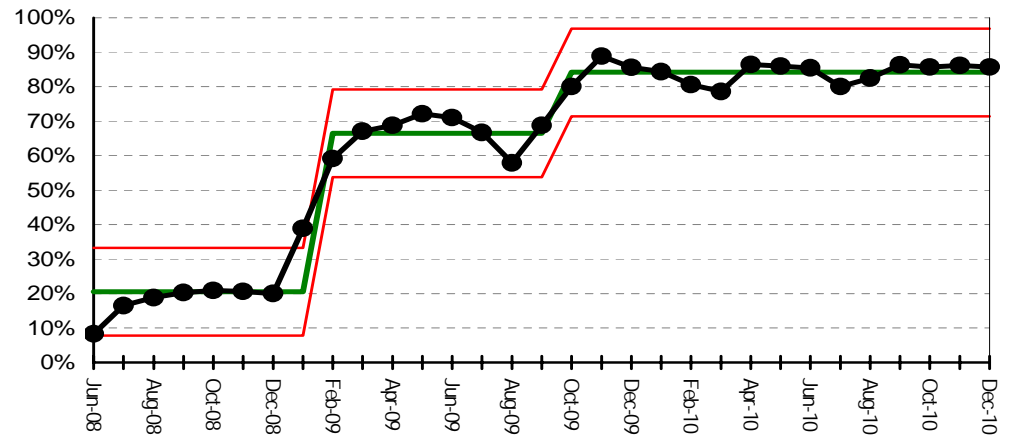
Emergency Patients

high is good



Elective Patients

high is good



Source: PAS and Anglia ICE

Data now includes day case screening performance