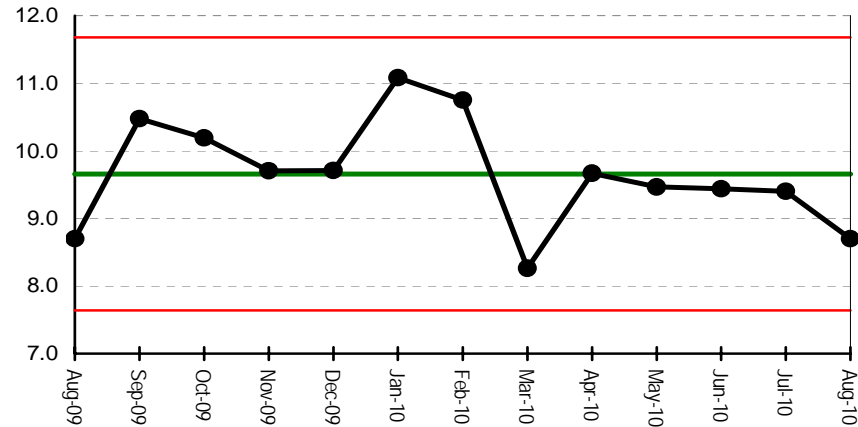


18 weeks Referral to Treatment (RTT) indicators

18 weeks data to August

Median Wait for treatment (weeks)

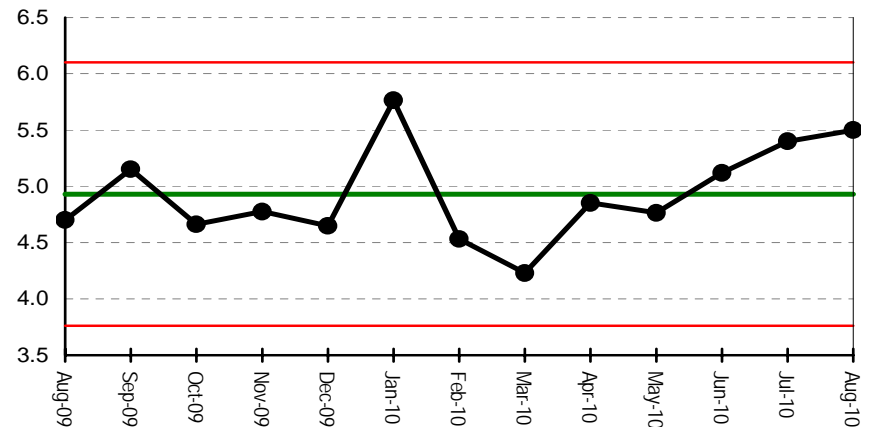
Admitted patients



Standard: TBA

Source: Monthly 18 week report

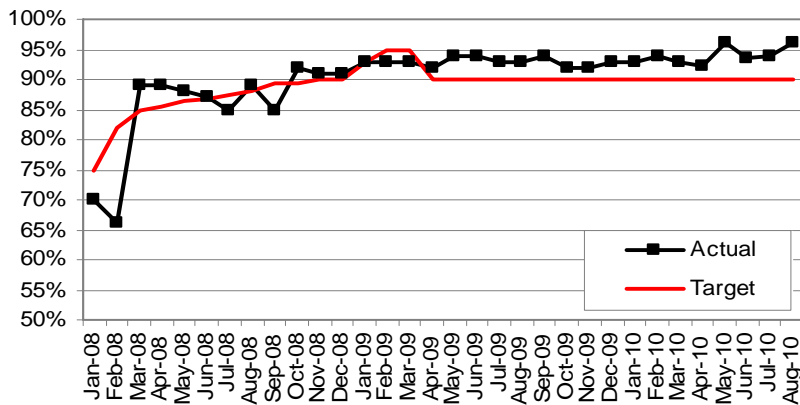
Non-admitted patients



Standard: TBA

Patients treated within 18 weeks (%)

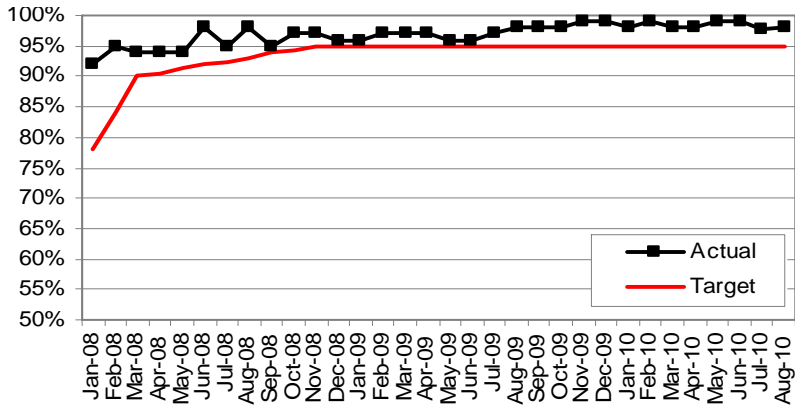
Admitted patients



Standard: 90%

Source: Monthly 18 week report

Non-admitted patients



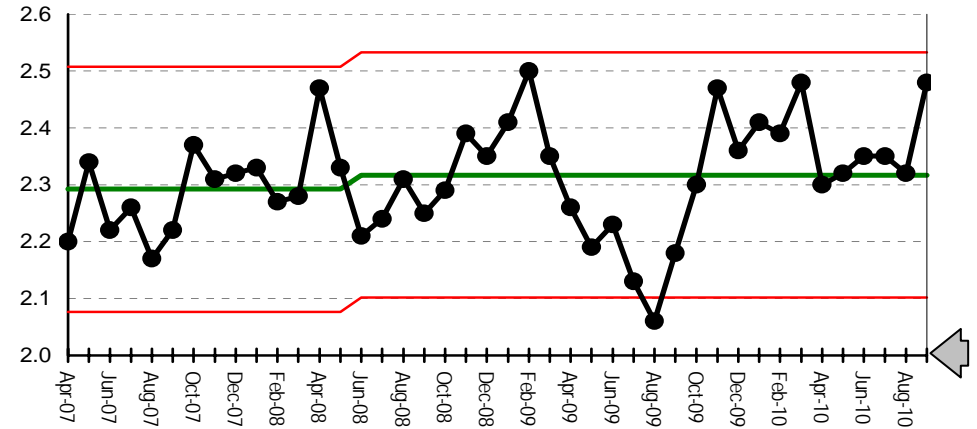
Standard: 95%

Outpatient indicators

Consultant to consultant referrals
 New indicator - definition to be agreed

Source: PAS data
 Standard: TBA

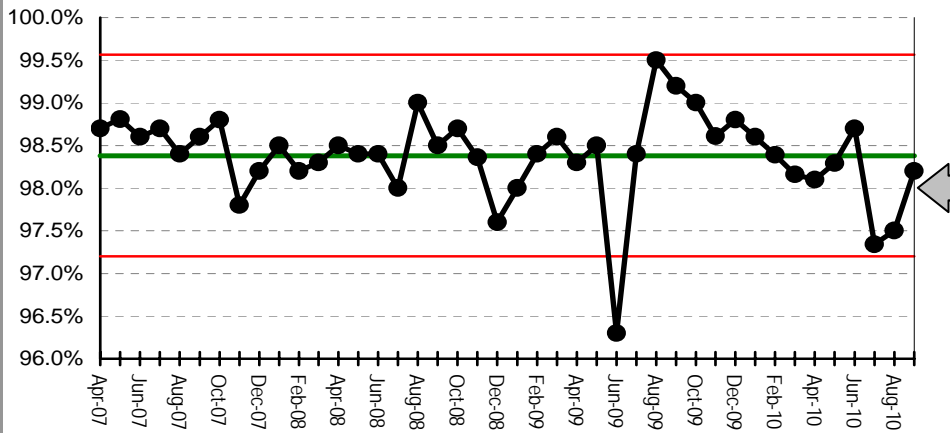
Outpatient follow-up ratio



Source: PAS data
 Standard: 2:1. The SLA target is different in each specialty this represents an amalgamated target

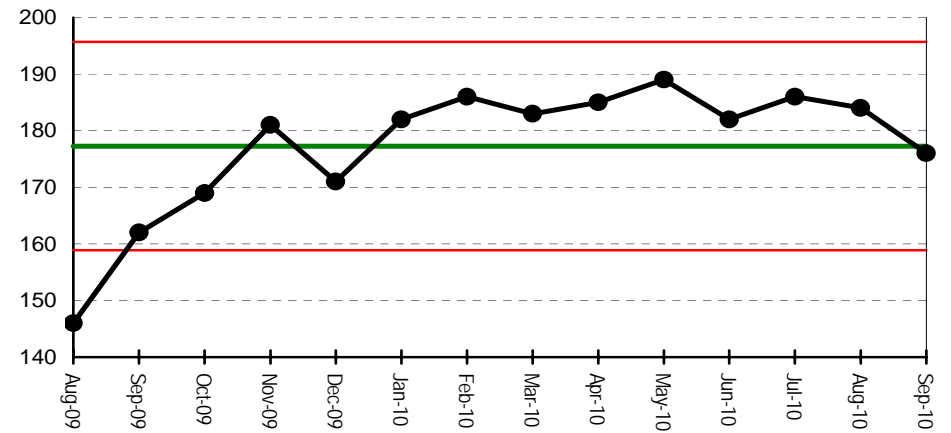
ED waits indicators

Percentage of attenders treated within 4 hours



Source: EDIS data
 Standard: 98% of ED attenders to be discharged within 4 hours

Median wait (minutes)

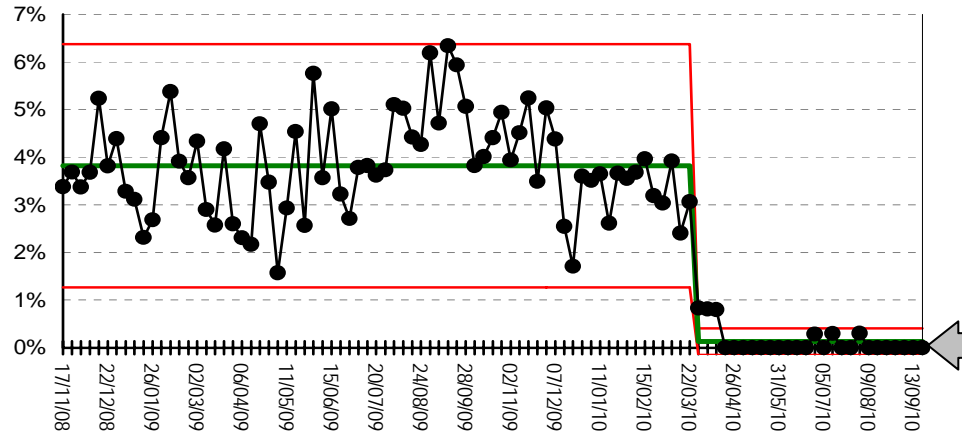


Source: EDIS data
 Standard: TBA

Admitted Patient indicators

Single sex accommodation

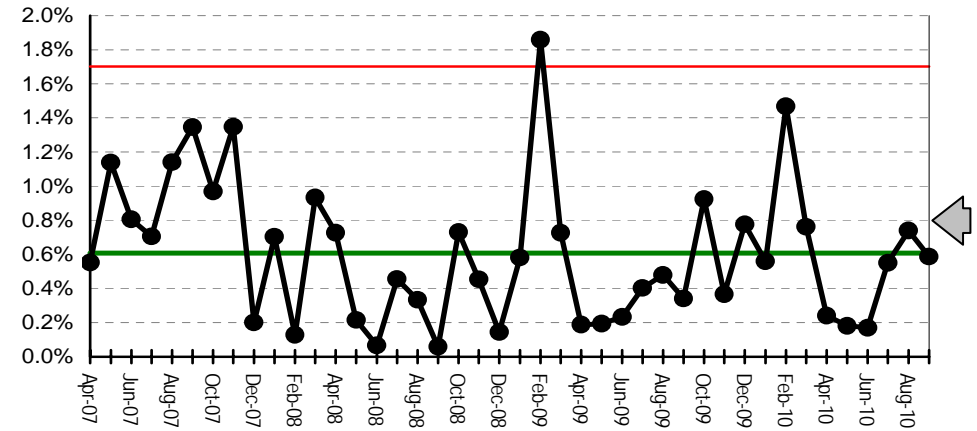
Total single sex breach days as a percentage of occupied bed days in week.



Source: Daily monitoring by bed managers

Standard: Zero breaches in patient areas other than critical care and ED

Cancelled Operations for non-clinical reasons

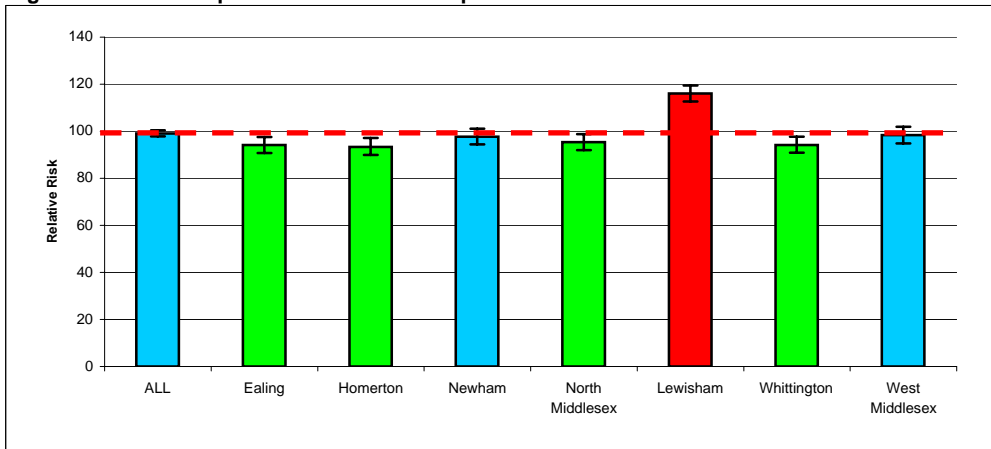


Source: PAS data

Standard: <0.8% of operations cancelled for non-clinical reasons (National tolerance)

Readmissions within 28 days (relative risk)

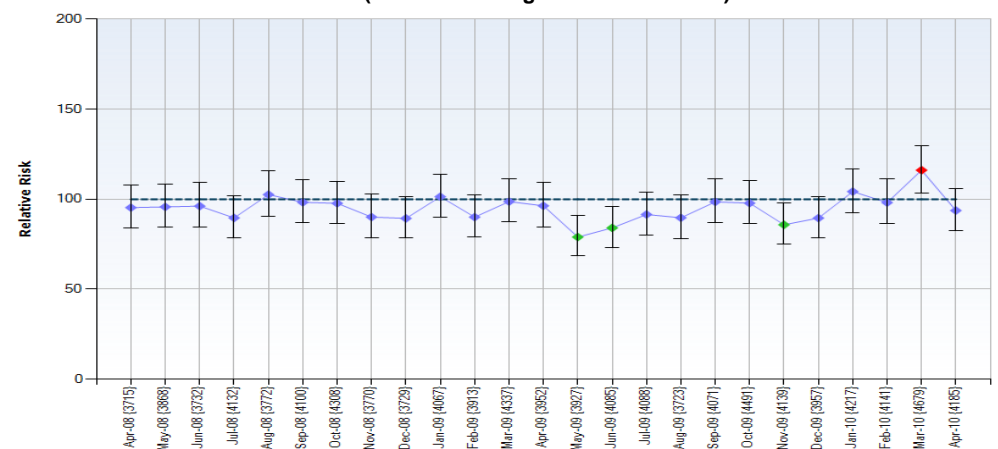
Against a Peer Group of similar London hospitals - last 12 months



Source: Dr Fosters - three month lag in data

Standard: to be Blue/Green rated

Benchmark - trend over time (standardised against national data)



Source: Dr Foster Intelligence. Relative Risk = index. Benchmark Year=2007/08

Standard: to be Blue/Green rated

Other Key Targets

Data is to September 2010 unless otherwise noted

	Criteria	Standard	Month	YTD	Forecast	
Reducing Mortality from Cancer			(Aug Data)	(Apr-Aug)		Data source: <i>CWT dataset</i>
Wait from urg GP referral until seen	% within 14 days	93%	93.4%	92.5%		
Wait from symptomatic breast referral until seen	14 days	93%	93.8%	92.0%		
Wait from Decision to Treat until 1st Treatment	31 days	96%	100%	100%		
Wait from Decision to treat until 2nd Treatment	31 days	96%	100%	100%		
Wait from GP Urgent Referral until Treatment	62 days	85%	76.2%	85%		
Wait from Consultant upgrade until Treatment	62 days	TBC	85.7%	90%		
Wait from Screening Referral until Treatment	62 days	90%	100%	100%		
Patient right of redress following cancelled operations						Data source: <i>PAS data</i>
% operations cancelled for non-clinical reasons	Elective	<0.8%	0.57%	0.41%		
% offers of new binding date within 28 days	Elective	95%	100%	100%		
Delayed transfers of care						Data source: <i>DTOCs database</i>
Number of delayed bed-days			97	658	1,316	
% delayed patients as a % of all patients		<=3.5%	1.2%	1.3%		
Reducing Mortality from Heart Disease						Data source: <i>PAS data</i>
Wait from GP Referral until Seen in RACP Clinic	% within 14 days	>98%	100%	100%		
Emergency bed-days						Data source: <i>PAS data</i>
Number of emergency bed-days		7500/m	6,789	46,028		
% Change from last year			11%	9%		
Maternity indicators						Data Source: TBC Data definition TBA Data definition TBA
Maternity bookings within 12 weeks 6 days	TBA	90%				
1:1 midwifery care in established labour (bi-monthly)	TBA					
Reducing inequalities in Infant Mortality						Data source: <i>PAS/Badger data</i>
Smoking in pregnancy at time of delivery	% deliveries	<17%	8%	9%		
Rate of Breastfeeding at birth	% deliveries	78%	89%	90%		
Diagnostic waits			(Aug Data)	Apr-Aug		Data source: <i>DM01 Central Return</i>
Patients waiting from referral until seen	% within 6 weeks		99.7%	99.8%		
NHS number completeness				Apr-Jul		Data source: <i>SUS (IC Data Quality dashboard)</i>
% Admissions with valid NHS number		98.1%		93.8%		Standard: National average
% Outpatient Attendances with valid NHS number		98.4%		96.0%		Standard: National average
HRG ungrouped activity				Apr-Jul		Data source: <i>SUS (IC Data Quality dashboard)</i>
% ED Attendances without HRG code		100%		99.9%		
% Inpatient Discharges without HRG code		100%		99.9%		
LAS Ambulance - A&E handover						Data source: <i>LAS monthly report</i>
% ambulance arrivals handed over within 15 mins	TBA	TBA				Data definition TBA