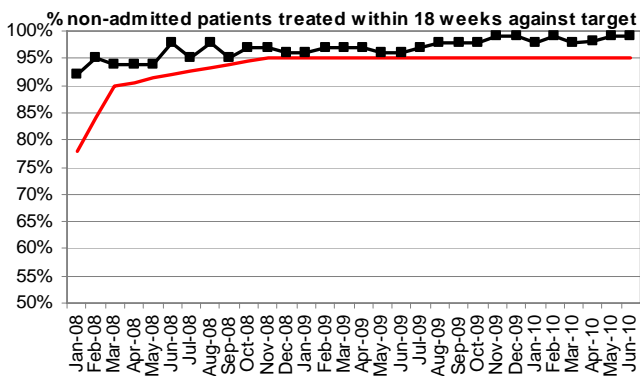
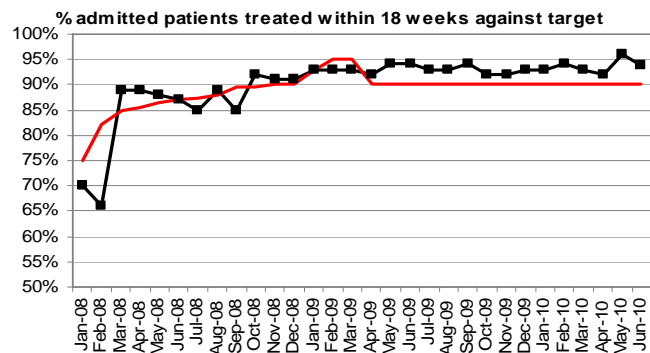


Access and Targets

Priority Targets

18 weeks Referral to Treatment (RTT) June 2010

one month delay in reporting

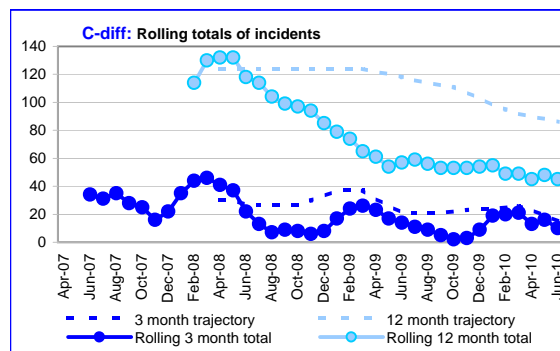
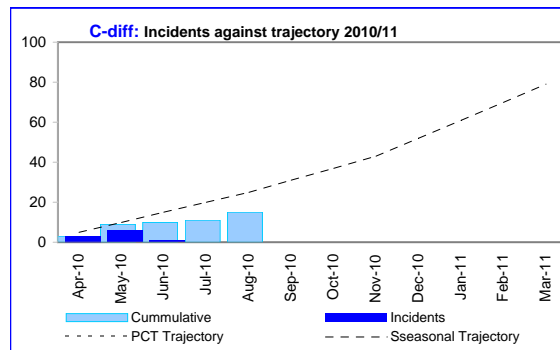


source: monthly 18 week report

Healthcare Acquired Infections

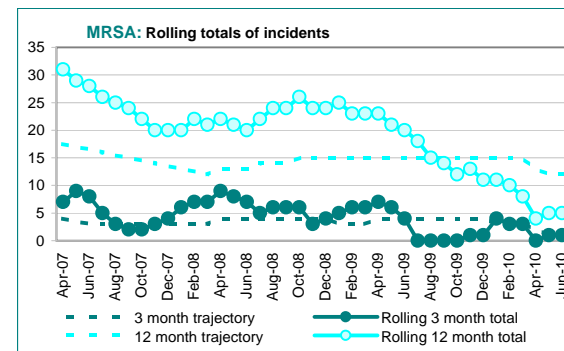
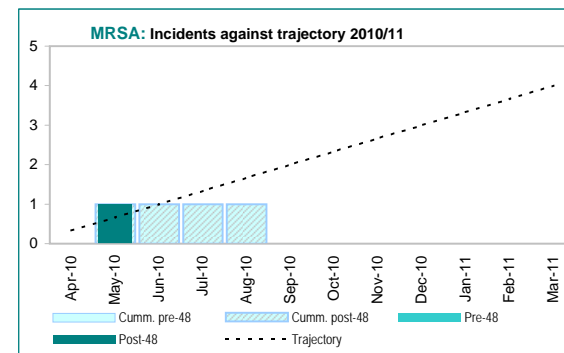
contains August data on a month to date basis

Clostridium difficile



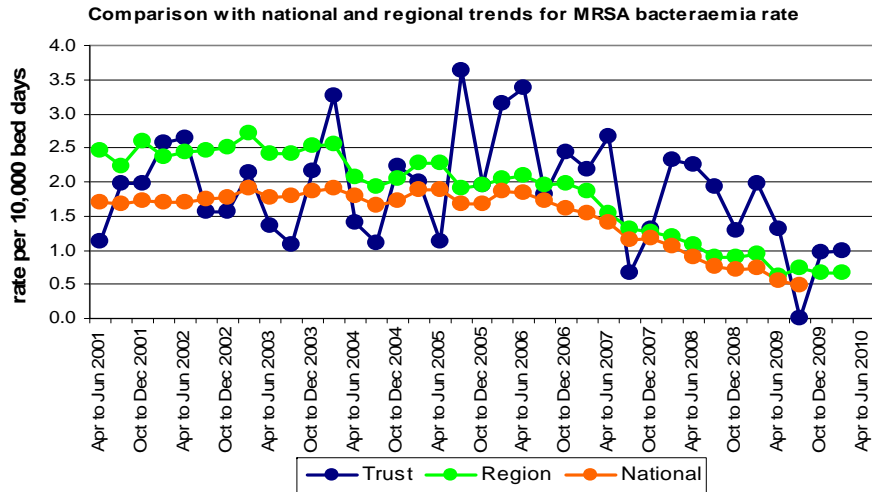
source: weekly Infection Control flash report

MRSA



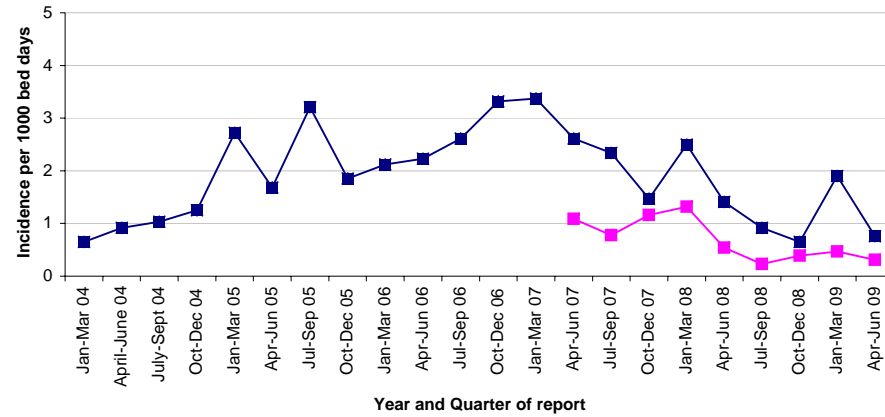
Access and Targets

Infection Control: Cases per bed day



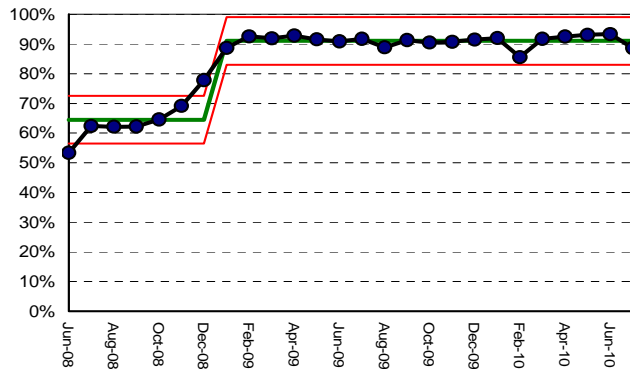
Source
Health Protection Agency

Clostridium difficile incidence (65 years and over): The Whittington Hospital NHS Trust. January 2004 - June 2009



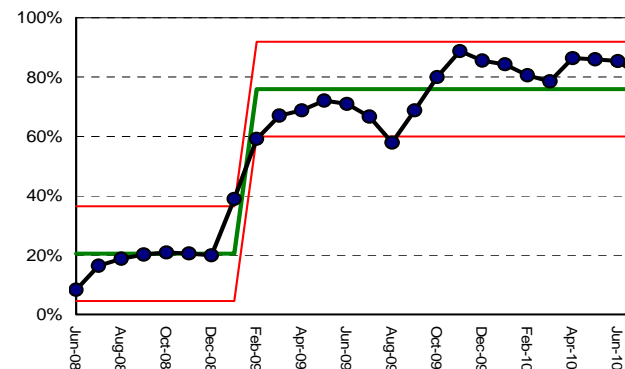
MRSA Screening compliance

Emergency Patients



Source: PAS and Anglia ICE

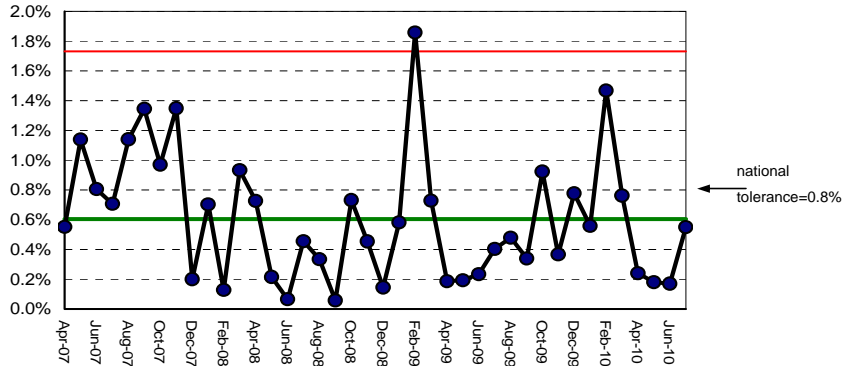
Elective Surgical Patients



Data now includes day case screening performance

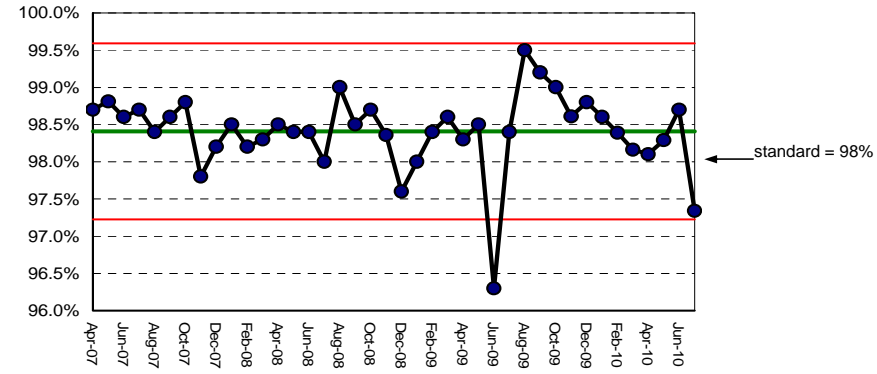
Access and Targets

Cancelled Operations for non-clinical reasons



source: PAS data

ED attendances: % treated within 4 hours



source: EDIS data

Other national targets

National Target Indicators - reviewed by Monitor & Healthcare Commission					
Standard	Criteria	Target	Jul-10	YTD	Forecast
Reducing Mortality from Cancer (Q1)					
Wait from urg GP Referral until Seen	% seen within 14 days	93%	94%	94%	
Wait from symptomatic breast referral until seen	% seen within 14 days (fr Jan10)	93%	92%	92%	
Wait from Decision to Treat until 1st Treatment	% treated within 31 days	96%	100%	100%	
Wait from Decision to treat until 2nd Treatment	% treated within 31 days	96%	100%	100%	
Wait from GP Urgent Referral until Treatment	% treated within 62 days	85%	88%	88%	
Wait from Consultant upgrade until Treatment	% treated within 62 days	TBC	89%	89%	
Wait from Screening Referral until Treatment	% treated within 62 days	90%	n/a	n/a	
Inpatients waiting over 26 weeks		Discontinued target			
GP referred Outpatient waiting over 13 weeks		Discontinued target			
Ensuring patient right of redress following cancelled operations					
Operations cancelled for non-clinical reasons	% of elective admissions	<0.8%	0.55%	0.29%	
Offers of new binding date	% within 28 days	95%	100%	100%	
Delayed transfers of care					
Number of delayed bed-days			62	460	1,380
% delayed patients as a % of all patients		<=3.5%	0.6%	1.2%	
Reducing Mortality from Heart Disease					
Wait from GP Referral until Seen in RACP Clinic	% seen within 14 days	>98%	100%	100%	
Each national core standard	number of standards failed				

National Target Indicators - reviewed by the Healthcare Commission only (annual health check)					
Standard	Criteria	Target	Jul-10	YTD	Forecast
Supporting patient choice and booking					
Choice of dates offered for Outpatient Appointments	% of new referrals	100%	100%	100%	100%
Choice of dates offered for Elective Admission	% of decisions to treat	100%	100%	100%	100%
Emergency bed-days					
Number of emergency bed-days		7500	8,473	32,378	-
% Change from last year			23%	8%	-
Drug misusers: information, screening and referral					
Meeting 5 requirements		100%	100%		100%
Reducing inequalities in Infant Mortality					
Smoking in pregnancy at time of delivery	% of deliveries	<17%	10%	10%	
Rate of Breastfeeding at birth	% of deliveries	78%	89%	90%	
Obesity: compliance with NICE guidance 43					
			100%		100%
Participation in audits					
			n/a		
Stroke Care					
	new indicator-to be confirmed				
Data quality: ethnic coding					
	new indicator-to be confirmed				
Data Quality: maternity data					
	new indicator-to be confirmed				
Diagnostic (June's figures)					
	Overall		Green		
Diagnostic Waits (non audiology)	% waiting within 13 weeks	100%	100%		
13 weeks Breaches		0	0	0	0
Total diagnostic tests	% waiting within 6 weeks	-	100%	100%	
Wait for MRI Scan appointment	% waiting within 6 weeks	-	100%	100%	
Wait for CT Scan appointment	% waiting within 6 weeks	-	100%	100%	
Wait for Ultrasound appointment (non-obstetric)	% waiting within 6 weeks	-	100%	100%	
All other diagnostic tests (non audiology)	% waiting within 6 weeks	-	100%	100%	