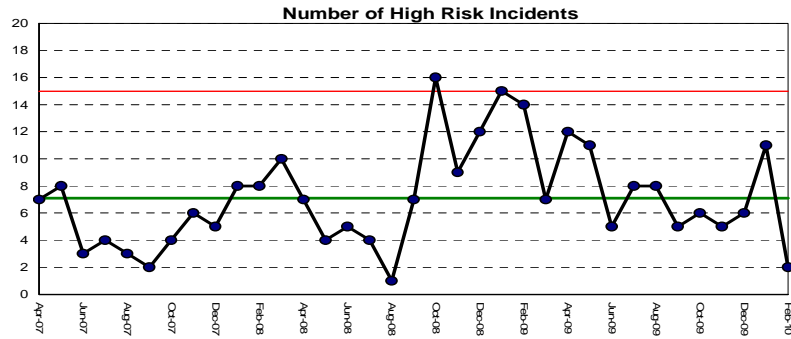


# Clinical Quality

note: refresh of Dr Fosters available for December 2009. Trust data refreshed to February 2010

## Adverse Incidents



Green: within normal SPC parameters AND benchmark is within national upper quartile

Amber: within normal SPC parameter AND benchmark is not above England

Red: lower control limit breach or run of 8 points below centre line (average)

source: pre-July 09: Safeguard, July 09 onwards: Datix

Target is to increase incident reporting to be in the top quartile of national benchmark performance

## Never Events

The Trust has had no Never Events to date this year

Source Risk Management Department

Never Events are :

Wrong site surgery

Retained instruments post surgery

Wrong route chemotherapy

Misplaced nasogastric or orogastric tube not detected prior to use

Inpatient death from post-partum haemorrhage after elective caesarean section

Intravenous administration of potassium chloride

source: NPSA

## Overall Mortality Rate

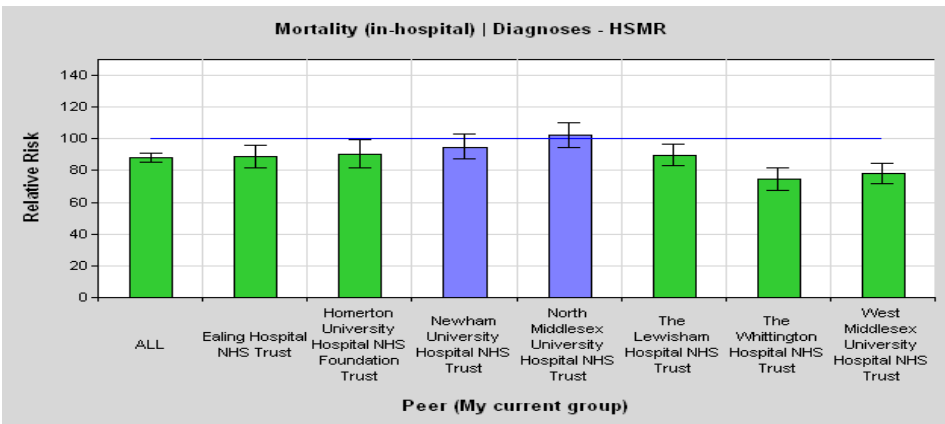
Benchmark (Dr Fosters Intelligence/NHS Choices. Standardised Mortality Rate, England, Annual)

Standardised on total England data = 100, June 2007 - July 2008)

Trust	2008 SMR	Trust	2008 SMR
North West London Hospitals	71.9	Lewisham University Hospital	97.6
<b>The Whittington Hospital</b>	73.1	Barnet & Chase Farm Hospitals	97.6
Imperial Healthcare	73.2	Whipps Cross University Hospital	98.2
Guy's & St Thomas'	75.3	West Middlesex University Hospital	98.5
Royal Free Hospital	78.4	Homerton University Hospital	99.2
St George's Healthcare	78.9	Kings College Hospital	100.6
Chelsea & Westminster	84.1	Mayday Healthcare	103.2
Barts & The London	84.4	Queen Elizabeth Hospital Woolwich	104.5
University College London Hospital	86.1	Dartford & Gravesham	105.8
Ealing Hospital	86.8	Barking Havering & Redbridge Hospitals	107.4
Bromley Hospitals	89.8	North Middlesex University Hospital	107.5
Kingston Hospital	93.0	Newham University Hospital	114.7
Hillingdon Hospital	94.2	Queen Mary's Sidcup	118.1
Epsom & St Helier Univeristy Hospital	97.1		

Target to be less than 100

Against a Peer Group of similar London hospitals - last 12 months (Jan 2009 - Dec 2009)



target: to be Blue/Green rated

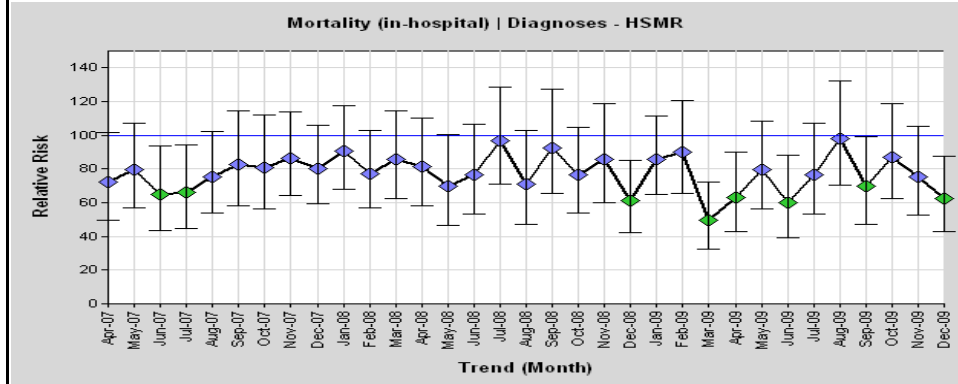
# Clinical Quality

note: refresh of Dr Fosters available for December 2009. Trust data refreshed to February 2010

## Mortality Rates (continued)

Mortality Rates over time

source: Dr Fosters



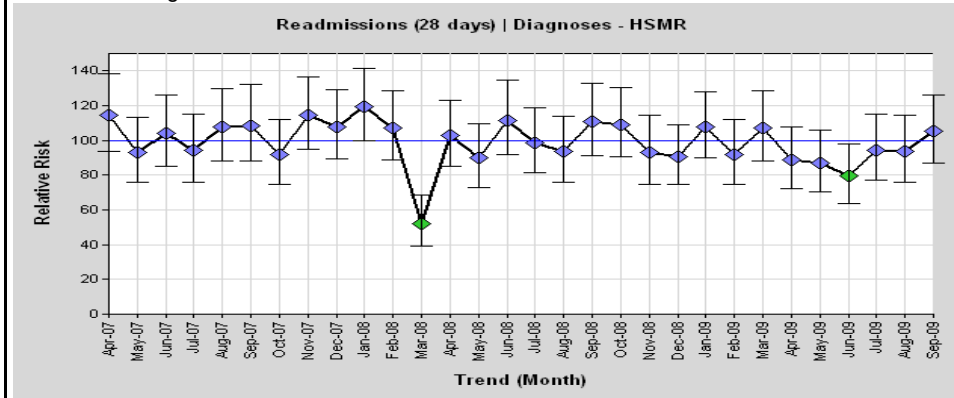
target: to be Blue/Green rated

**Avoidable Mortality has been removed as a measure.  
Definition of the replacement measure is still in discussion**

## Readmissions

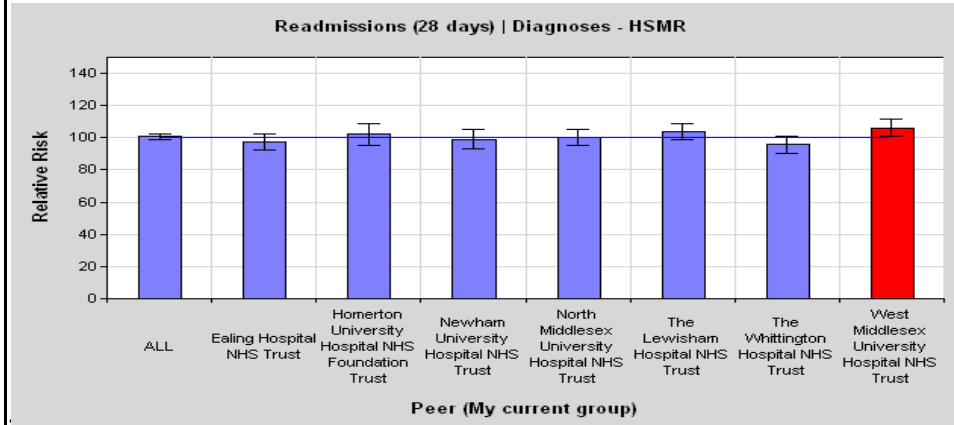
source: Dr Fosters - three month lag in data

Benchmark - trend over time  
Standardised against national data



target: to be Blue/Green rated

Against a Peer Group of similar London hospitals - last 12 months



target: to be Blue/Green rated