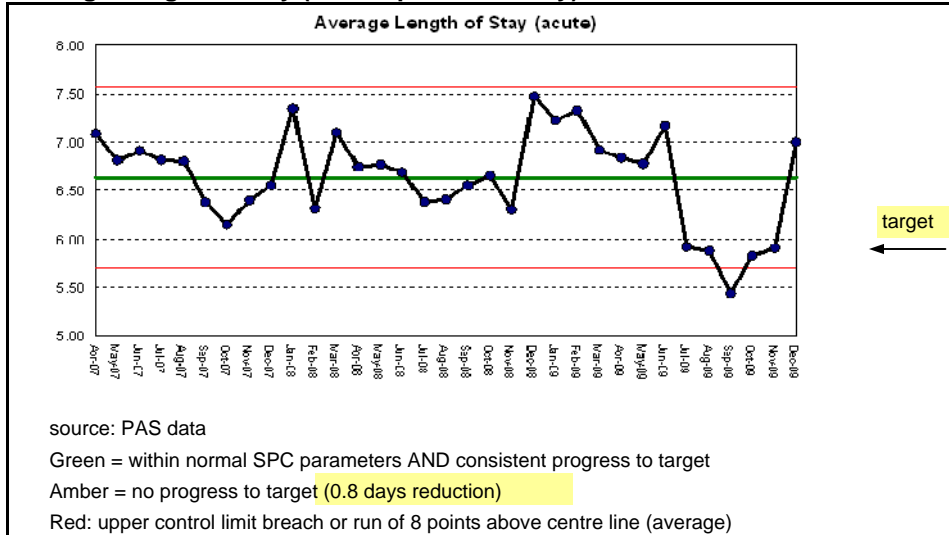


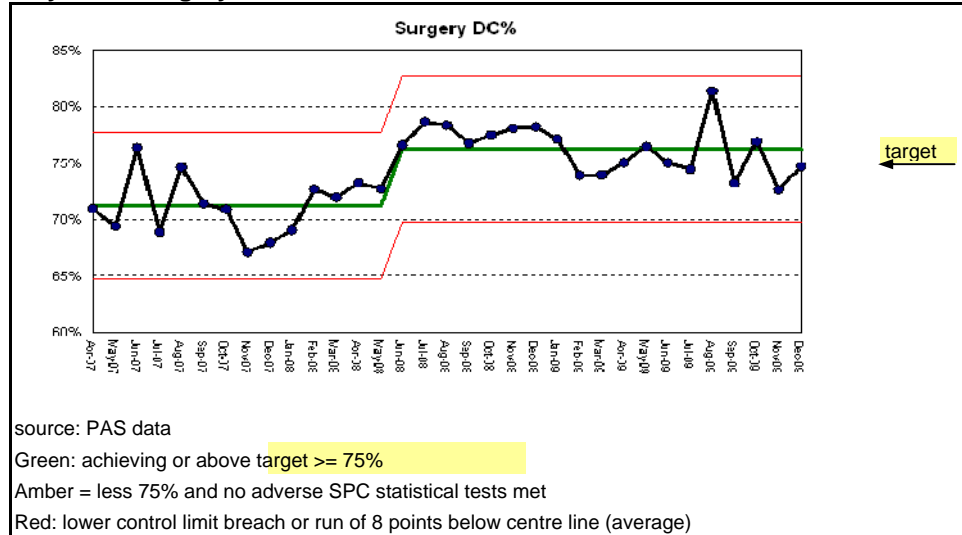
Workforce & Efficiency

Period: December 2009

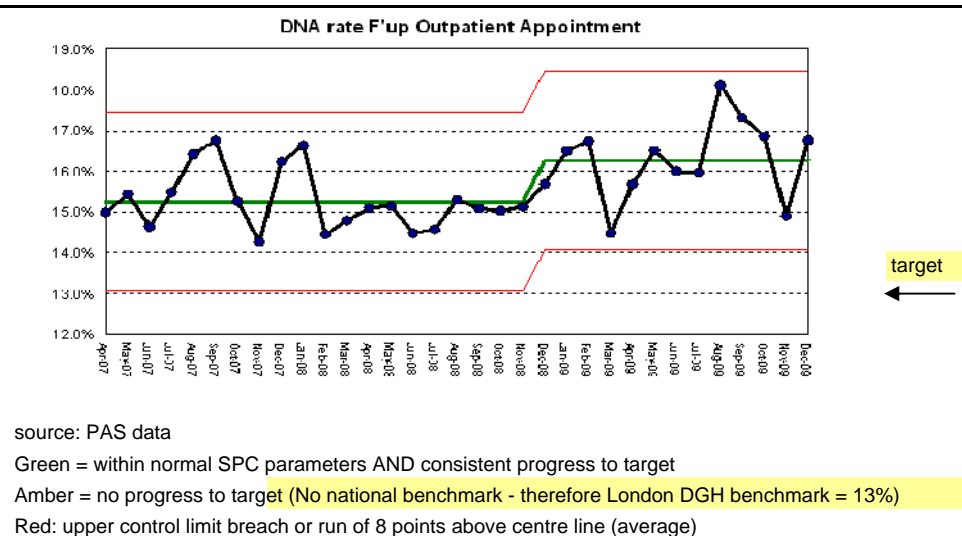
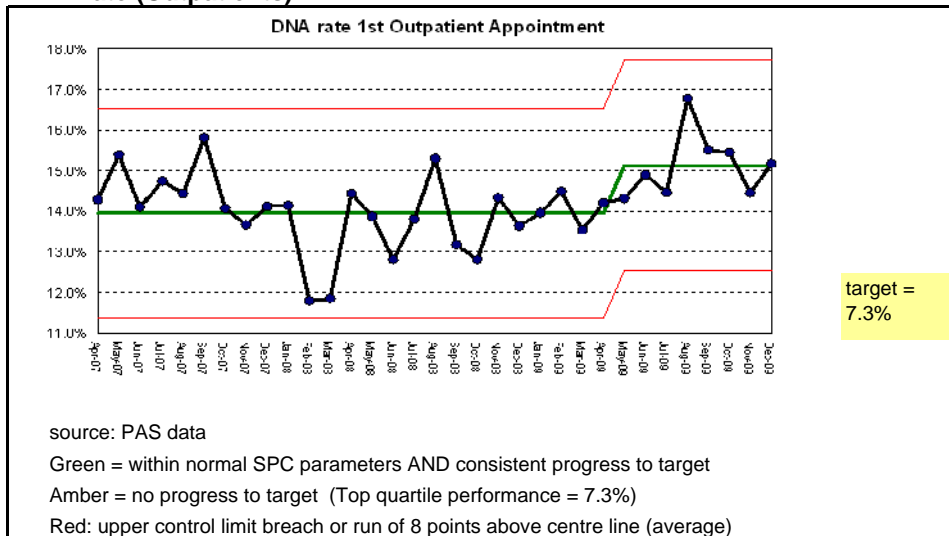
Average Length of Stay (acute specialties only)



Day Case Surgery Rate



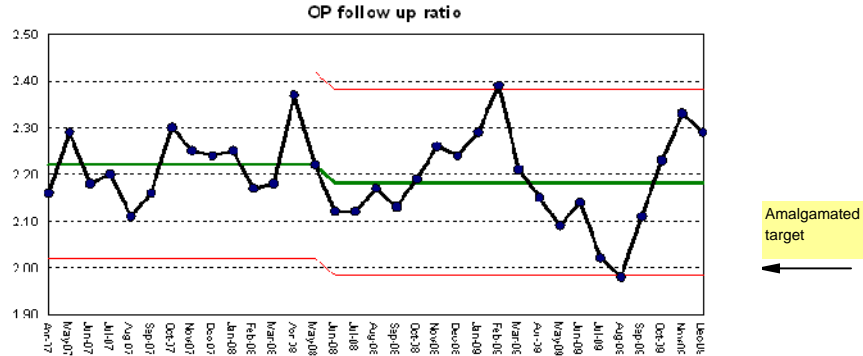
DNA Rate (Outpatients)



Workforce & Efficiency

Outpatient Follow Up ratio

Target different within each speciality - the target here represents amalgamated target



source: PAS data

Green = within normal SPC parameters

Amber = no progress to target - 2:1

Red: upper control limit breach or run of 8 points above centre line (average)

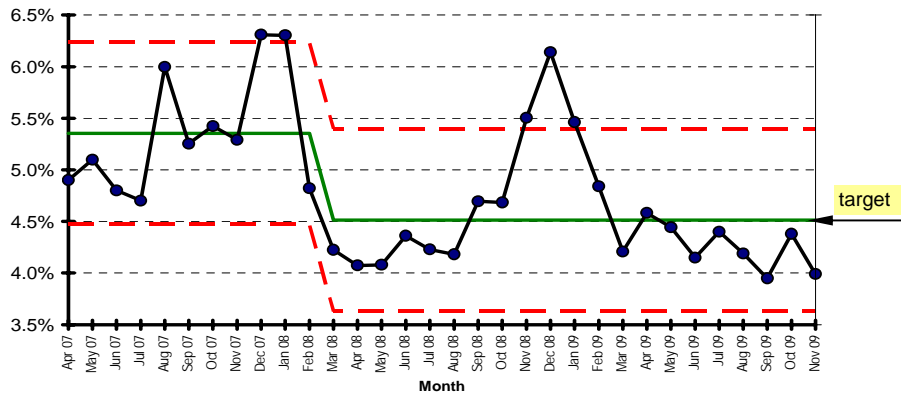
Theatre Utilisation

Not updated - data not available

New Theatre Management System being installed in 2010

Sickness Absence Rate

Sickness Absence Rate



source: ESR

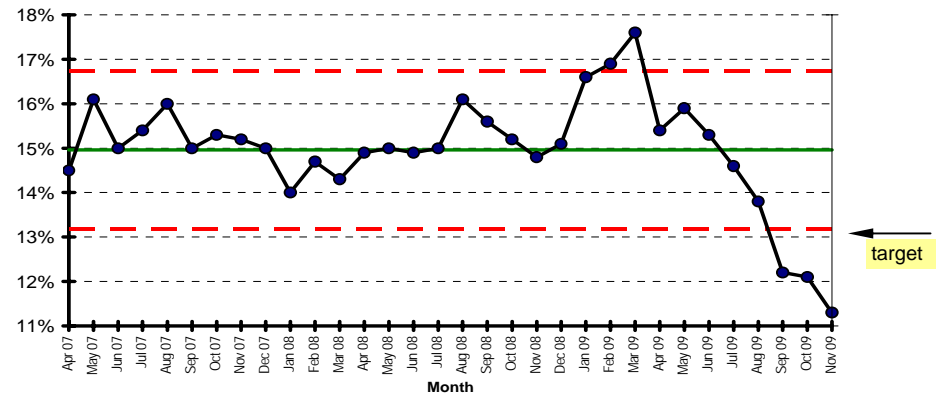
Green = within normal SPC parameters AND consistent progress to target

Amber = no progress to target

Red: upper control limit breach or run of 8 points above centre line (average)

Vacancy Rate

Vacancy Rate



source: ESR

Green = within normal SPC parameters AND consistent progress to target

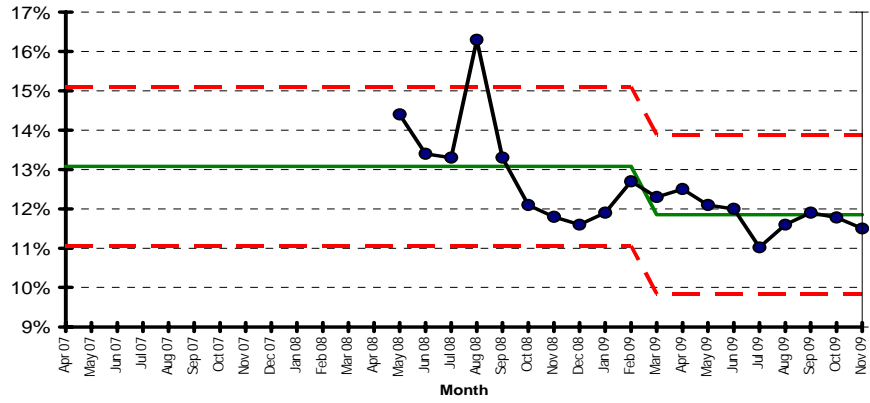
Amber = no progress to target - target is an average 13%

Red: upper control limit breach or run of 8 points above centre line (average)

Workforce & Efficiency

Turnover

Turnover Rate



source: ESR