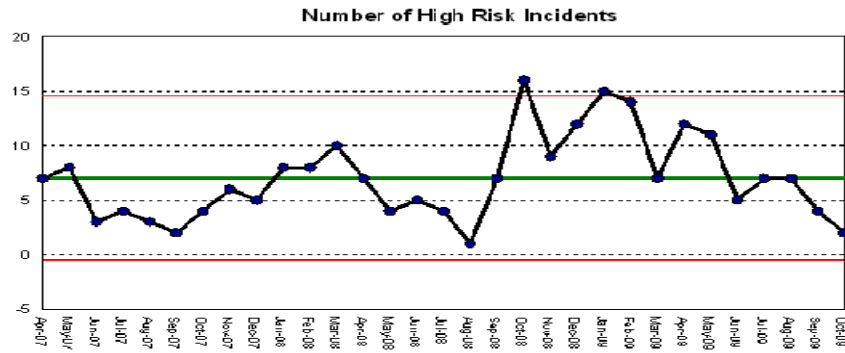


# Clinical Quality

note: refresh of Dr Fosters available for August 2009. Trust data refreshed to September 2009

## Adverse Incidents



Green: within normal SPC parameters AND benchmark is within national upper quartile

Amber: within normal SPC parameter AND benchmark is not above England

Red: lower control limit breach or run of 8 points below centre line (average)

source: pre-July 09: Safeguard, July 09 onwards: Datix

Target is to increase incident reporting to be in the top quartile of national benchmark performance

## Never Events

The Trust has had no Never Events this year

Source Risk Management Department

Never Events are :

Wrong site surgery

Retained instruments post surgery

Wrong route chemotherapy

Misplaced nasogastric or orogastric tube not detected prior to use

Inpatient death from post-partum haemorrhage after elective caesarean section

Intravenous administration of potassium chloride

source: NPSA

## Overall Mortality Rate

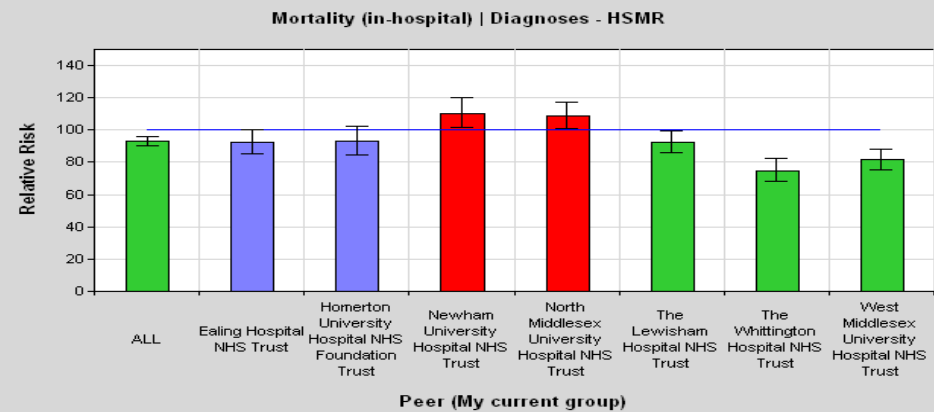
**Benchmark** (Dr Fosters Intelligence/NHS Choices. Standardised Mortality Rate, England, Annual)

Standardised on total England data = 100, June 2007 - July 2008)

Trust	2008 SMR	Trust	2008 SMR
North West London Hospitals	71.9	Lewisham University Hospital	97.6
<b>The Whittington Hospital</b>	73.1	Barnet & Chase Farm Hospitals	97.6
Imperial Healthcare	73.2	Whipps Cross University Hospital	98.2
Guy's & St Thomas'	75.3	West Middlesex University Hospital	98.5
Royal Free Hospital	78.4	Homerton University Hospital	99.2
St George's Healthcare	78.9	Kings College Hospital	100.6
Chelsea & Westminster	84.1	Mayday Healthcare	103.2
Barts & The London	84.4	Queen Elizabeth Hospital Woolwich	104.5
University College London Hospital	86.1	Dartford & Gravesham	105.8
Ealing Hospital	86.8	Barking Havering & Redbridge Hospitals	107.4
Bromley Hospitals	89.8	North Middlesex University Hospital	107.5
Kingston Hospital	93.0	Newham University Hospital	114.7
Hillingdon Hospital	94.2	Queen Mary's Sidcup	118.1
Epsom & St Helier Univeristy Hospital	97.1		

Target to be less than 100

Against a Peer Group of similar London hospitals - last 12 months (Sept 2008-(Aug 2009)



target: to be Blue/Green rated

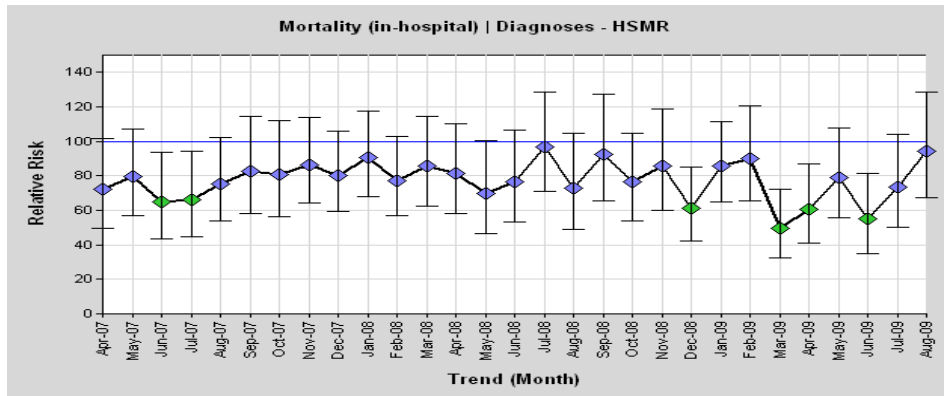
# Clinical Quality

note: refresh of Dr Fosters available for August 2009. Trust data refreshed to September 2009

## Mortality Rates (continued)

Mortality Rates over time

source: Dr Fosters



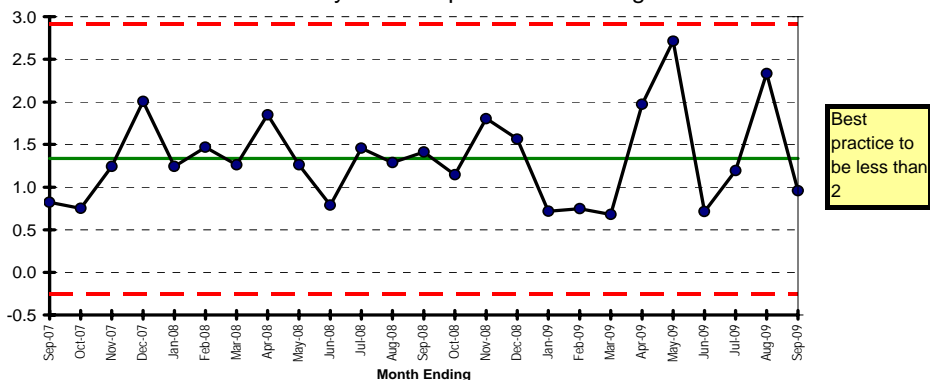
target: to be Blue/Green rated

## Avoidable Mortality (up to September 2009)

Defined as "deaths from causes considered amenable to health care... Healthcare intervention includes preventing disease onset as well as treating disease."

Selected diagnoses and age band (excludes over 75 year olds)

Avoidable Mortality - deaths per 1000 discharges



source: PAS data

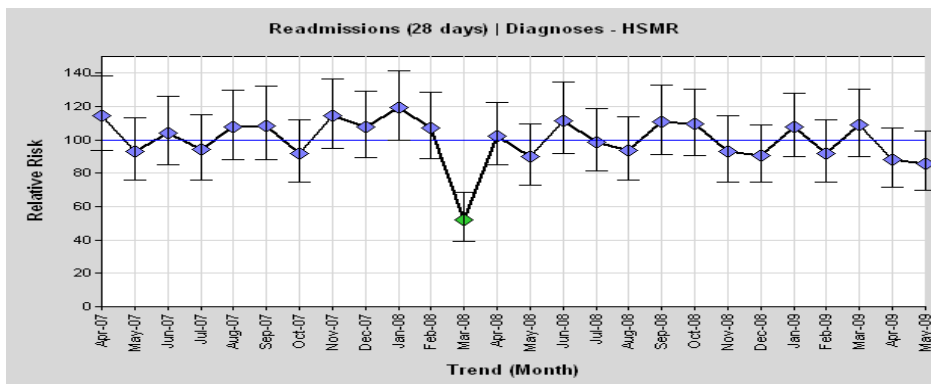
Green: within normal SPC parameters AND less than the target

Red: above target or run of 8 points above centre line (average)

## Readmissions

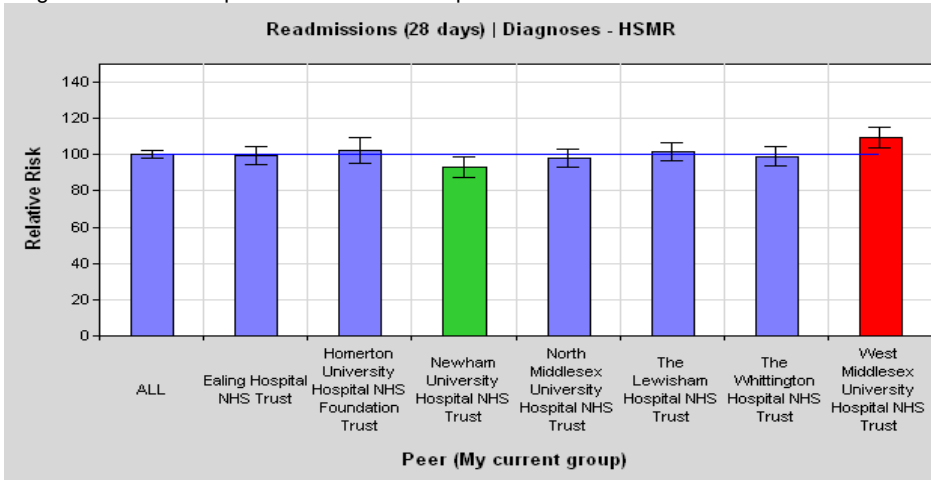
source: Dr Fosters - three month lag in data

Benchmark - trend over time  
Standardised against national data



target: to be Blue/Green rated

Against a Peer Group of similar London hospitals - last 12 months



source: Dr Foster Intelligence. Relative Risk = index. Benchmark Year=2007/08

target: to be Blue/Green rated