

# Access and Targets

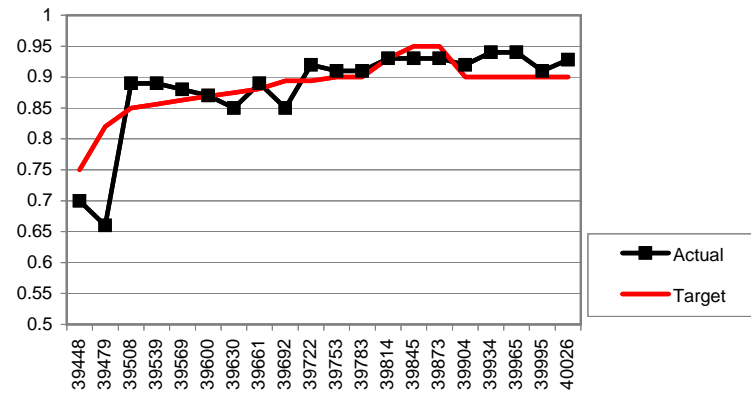
## Priority Targets

### 18 weeks Referral to Treatment (RTT) August 2009

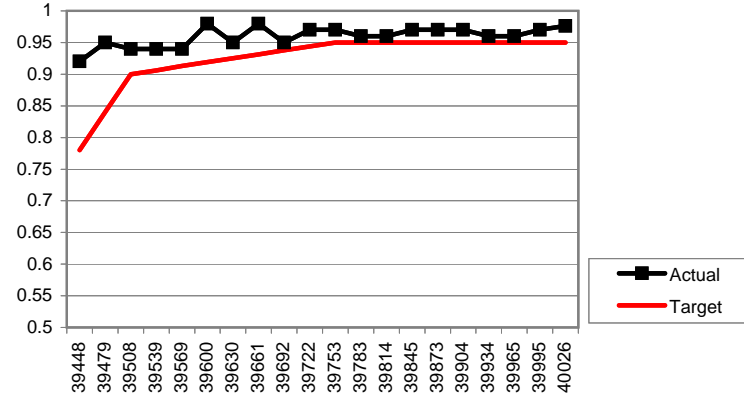
one month delay in reporting

source: monthly 18 week report

% admitted patients treated within 18 weeks against target



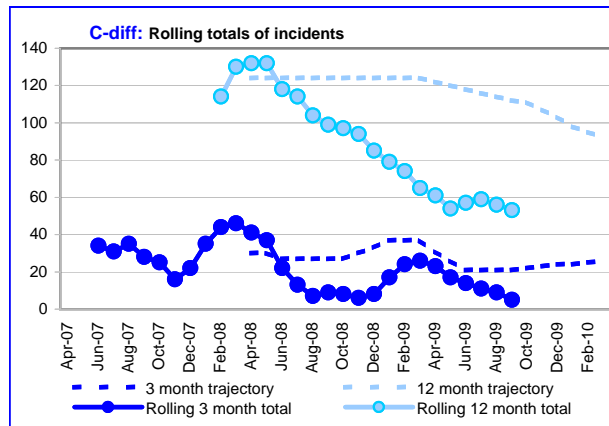
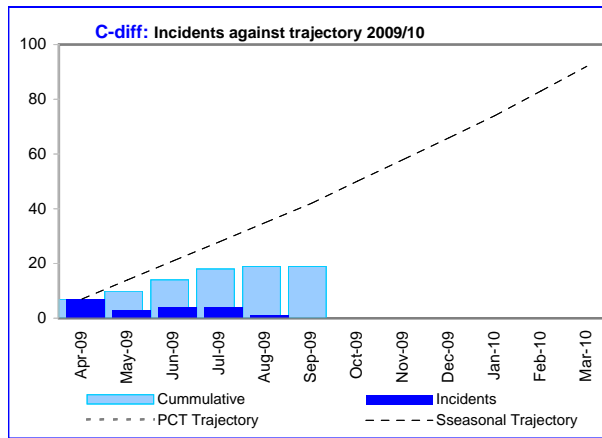
% non-admitted patients treated within 18 weeks against target



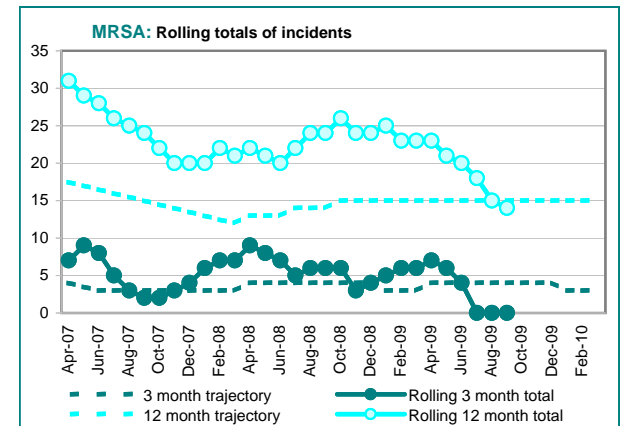
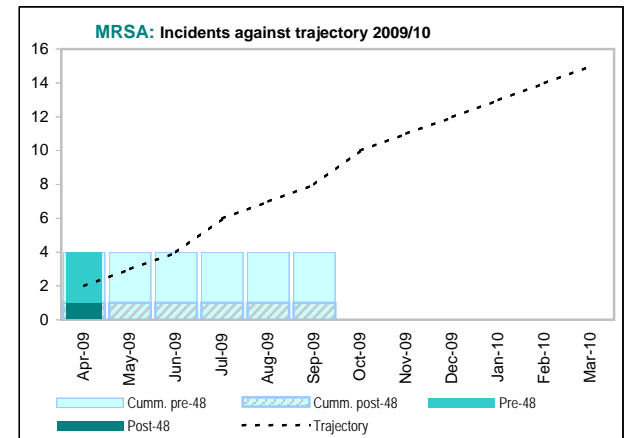
## Healthcare Acquired Infections

source: weekly Infection Control flash report (contains September data on a month to date basis)

### Clostridium difficile

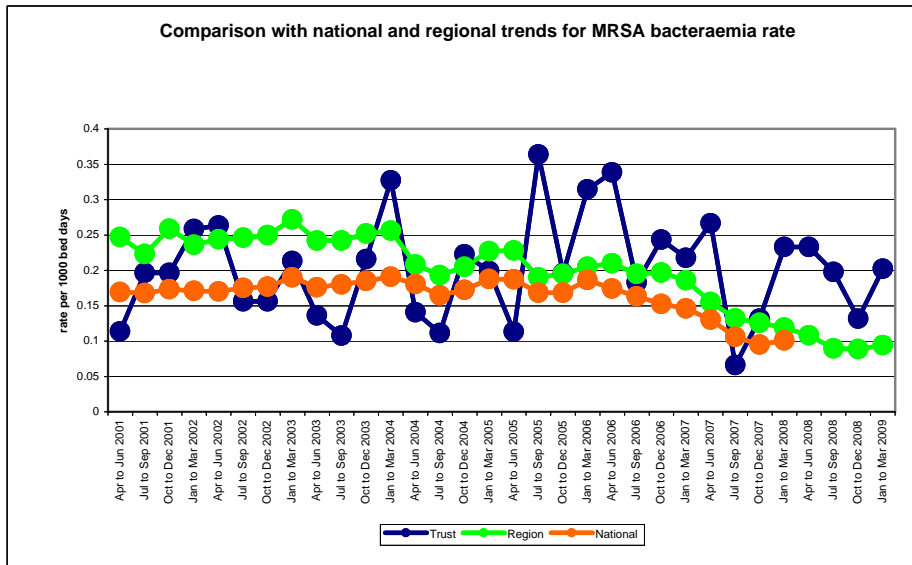


### MRSA



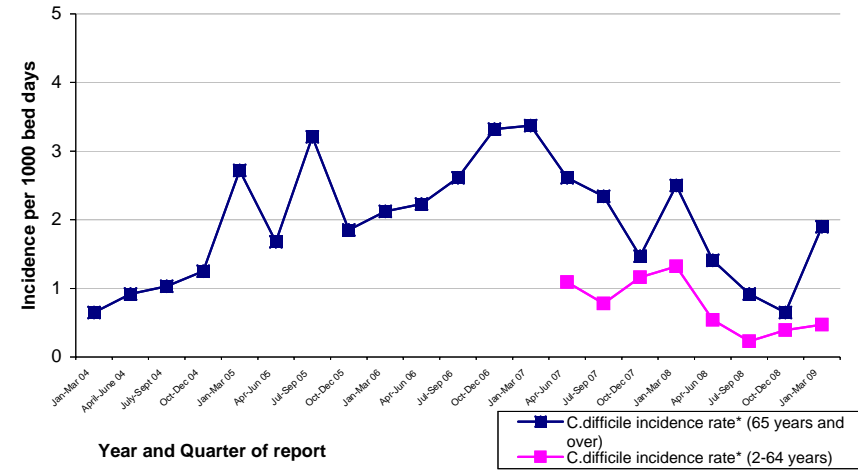
# Access and Targets

## Infection Control: Cases per bed day

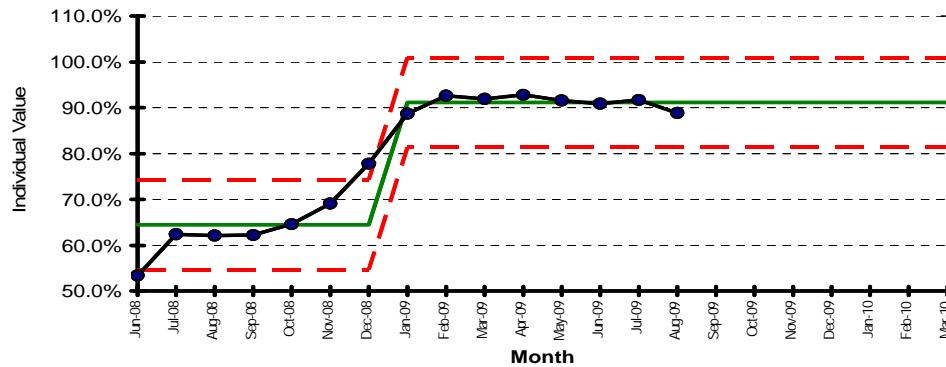


Source  
Health Protection Agency

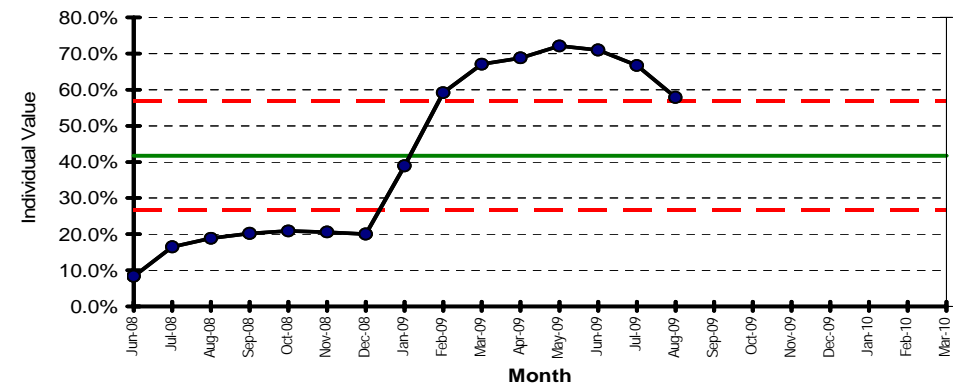
*Clostridium difficile* incidence: The Whittington Hospital NHS Trust.  
January 2004 - March 2009



MRSA screening compliance: Emergency Patients



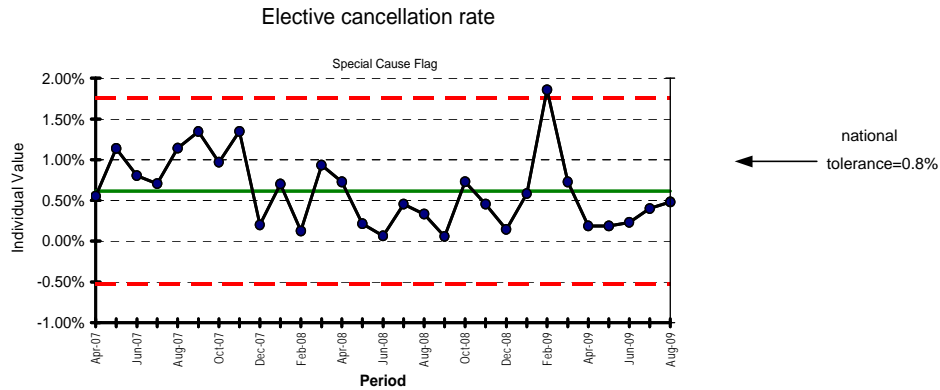
MRSA screening compliance: Elective Surgical Patients



Data now includes day case screening performance

# Access and Targets

## Cancelled Operations for non-clinical reasons



source: PAS data

## Other national targets

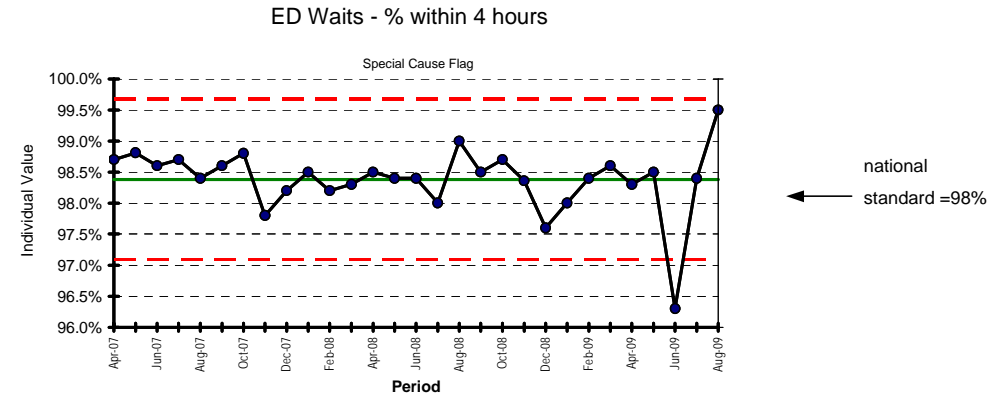
National Target Indicators - reviewed by Monitor & Healthcare Commission					
Standard	Criteria	Target	Aug-09	YTD	Forecast
<b>Reducing Mortality from Cancer (July's figures)</b>					
Wait from urg GP Referral until Seen	% seen within 14 days		93%	n/a	n/a
Wait from Decision to Treat until 1st Treatment	% treated within 31 days		100%	n/a	n/a
Wait from Decision to treat until 2nd Treatment	% treated within 31 days		100%	n/a	n/a
Wait from GP Urgent Referral until Treatment	% treated within 62 days		90%	n/a	n/a
Wait from Consultant upgrade until Treatment	% treated within 62 days		100%	n/a	n/a
Wait from Screening Referral until Treatment	% treated within 62 days		100%	n/a	n/a
<b>Inpatients waiting over 26 weeks</b>		0	0	0	0
<b>GP referred Outpatient waiting over 13 weeks</b>		0	0	0	0
<b>Ensuring patient right of redress following cancelled operations</b>					
Operations cancelled for non-clinical reasons	% of elective admissions	<0.8%	0.48%	0.30%	<0.5%
Offers of new binding date	% within 28 days	95%	100%	100%	100%
<b>Delayed transfers of care</b>					
Number of delayed bed-days			133	885	2,124
% delayed patients as a % of all patients		<=3.5%	1.5%	2.0%	<3.5%
<b>Reducing Mortality from Heart Disease</b>					
Wait from GP Referral until Seen in RACP Clinic	% seen within 14 days	>98%	100%	98%	>98%
Each national core standard	number of standards failed	0			

## Cancer Waits:

New definitions and targets from January 2009 onwards

No standards or targets yet published

## ED attendances: % treated within 4 hours



source: EDIS data

National Target Indicators - reviewed by the Healthcare Commission only (annual health check)					
Standard	Criteria	Target	Aug-09	YTD	Forecast
<b>Supporting patient choice and booking</b>					
Choice of dates offered for Outpatient Appointments	% of new referrals	100%	100%	100%	100%
Choice of dates offered for Elective Admission	% of decisions to treat	100%	100%	100%	100%
<b>Emergency bed-days</b>					
Number of emergency bed-days		7500	6,419	36,163	-
% Change from last year			-8%	1%	-
<b>Drug misusers: information, screening and referral</b>	Meeting 5 requirements	100%	100%		100%
<b>Reducing inequalities in Infant Mortality</b>					
Smoking in pregnancy at time of delivery	% of deliveries	<17%	9.9%	9.8%	9%
Rate of Breastfeeding at birth	% of deliveries	78%	87.4%	89.2%	90.0%
<b>Obesity: compliance with NICE guidance 43</b>			100%		100%
<b>Participation in audits</b>			n/a		
<b>Stroke Care</b>	new indicator-to be confirmed				
<b>Data quality: ethnic coding</b>	new indicator-to be confirmed				
<b>Data Quality: maternity data</b>	new indicator-to be confirmed				
<b>Diagnostic (July's figures)</b>			<b>Overall</b>		<b>Green</b>
Diagnostic Waits (non audiology)	% waiting within 13 weeks	100%	100%		
13 weeks Breaches		0	0	0	0
Total diagnostic tests	% waiting within 6 weeks	-	100%		
Wait for MRI Scan appointment	% waiting within 6 weeks	-	100%		
Wait for CT Scan appointment	% waiting within 6 weeks	-	100%		
Wait for Ultrasound appointment (non-obstetric)	% waiting within 6 weeks	-	100%		
All other diagnostic tests (non audiology)	% waiting within 6 weeks	-	100%		