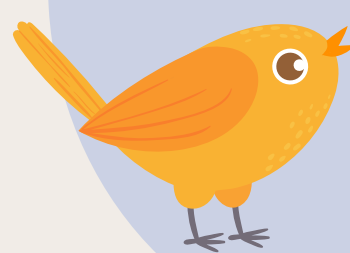


Whittington Maternity in Numbers

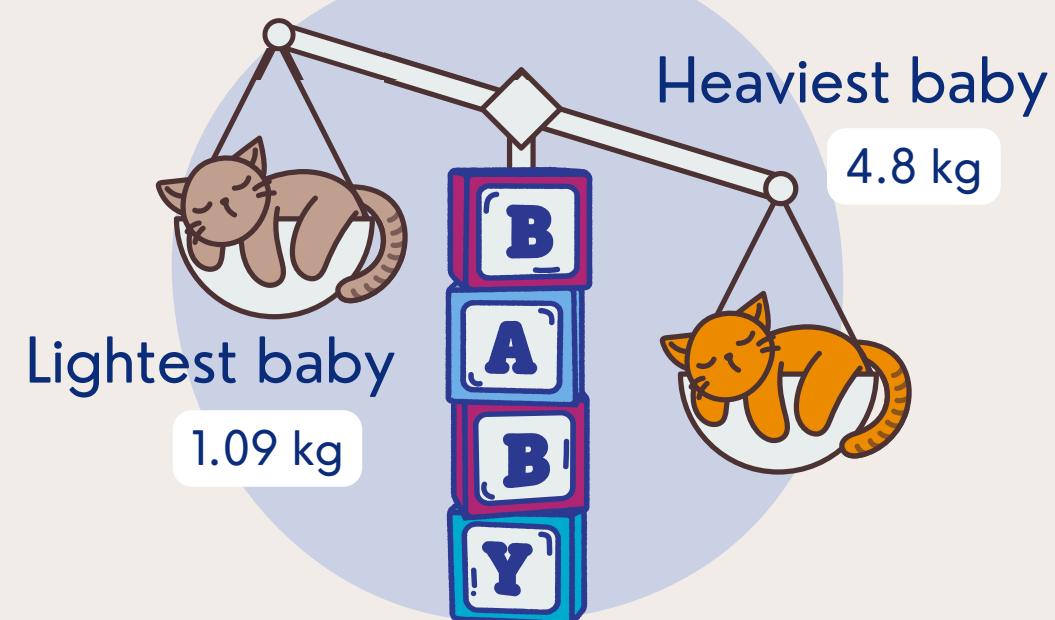
July to September 2024

Earliest arrival

28 weeks
4 days

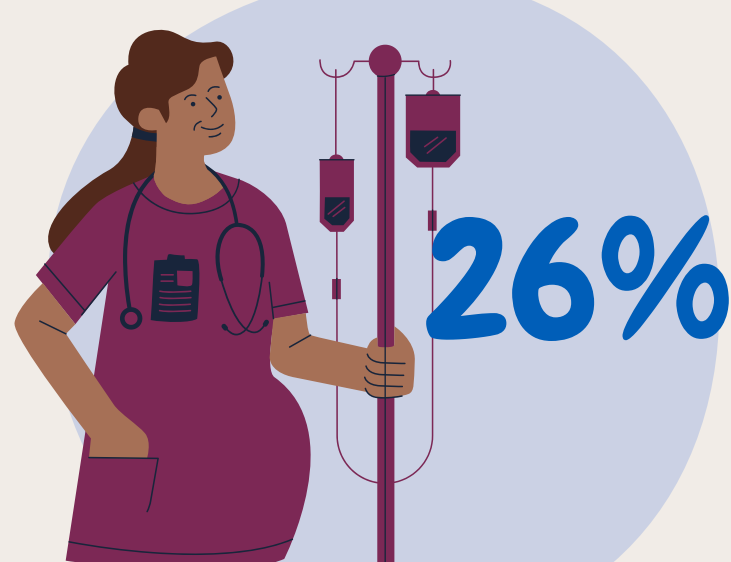


Number of babies
born



Lightest baby
1.09 kg

Heaviest baby
4.8 kg

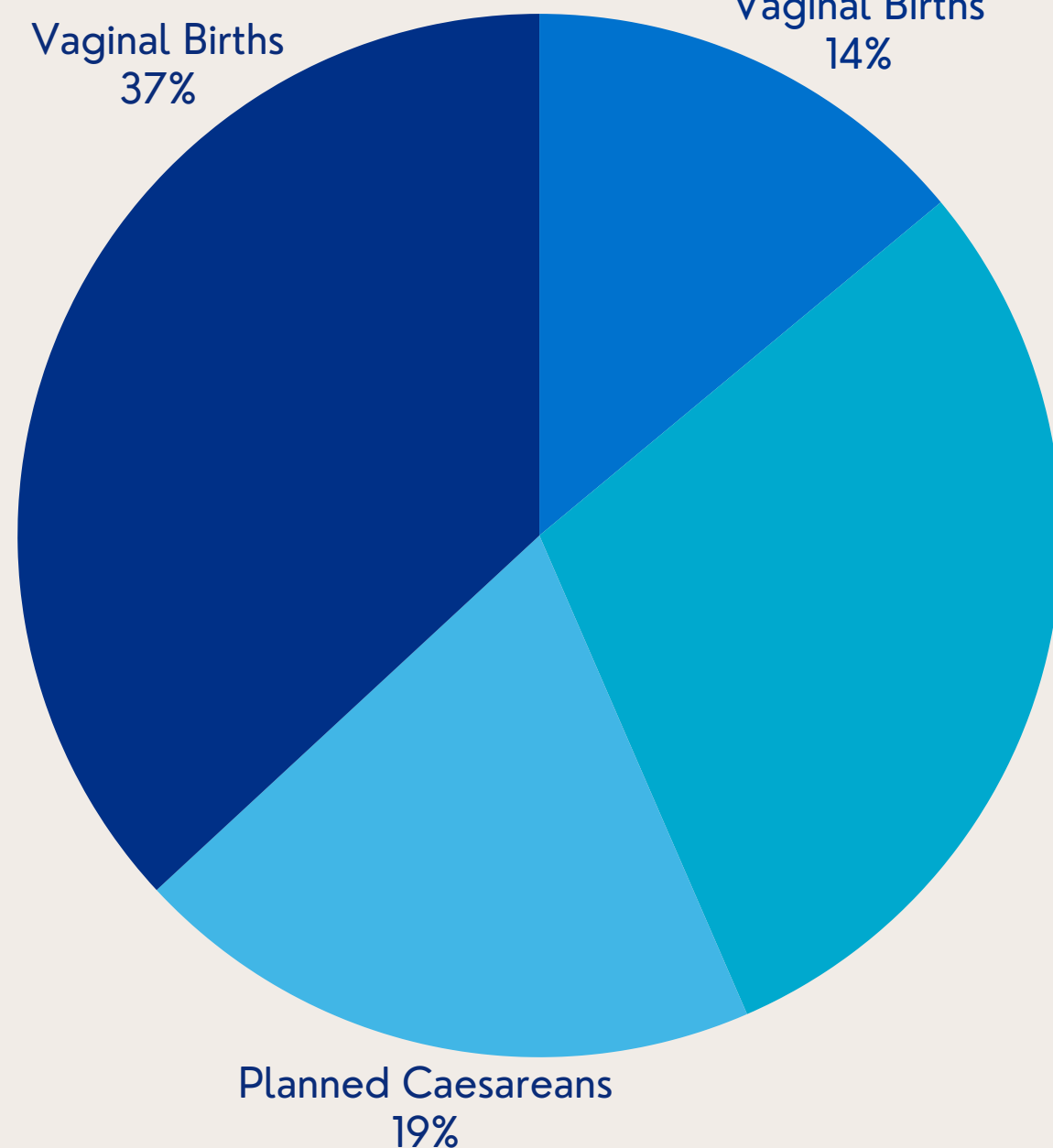


26%

Induction of
labour rate

Vaginal Births
37%

Assisted
Vaginal Births
14%

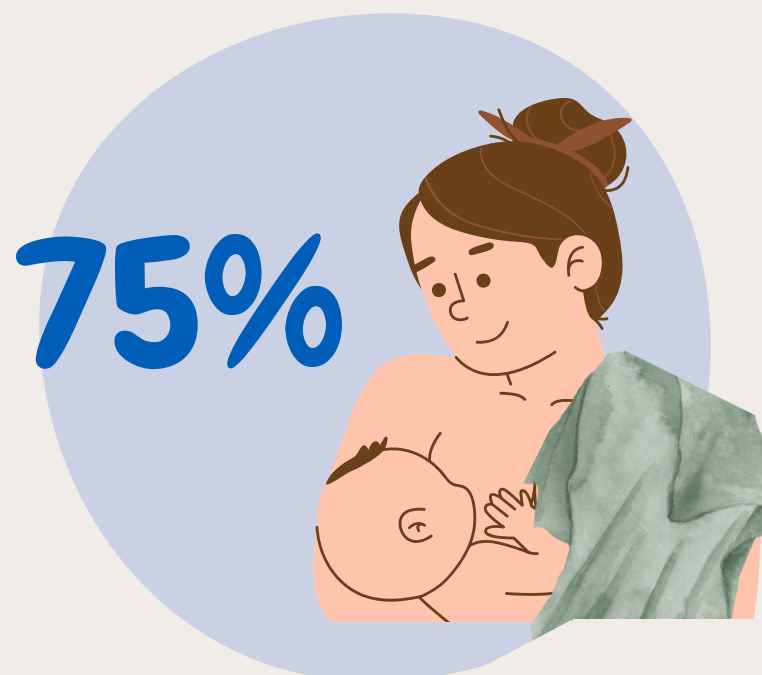


Planned Caesareans
19%

Unplanned
Caesareans
30%

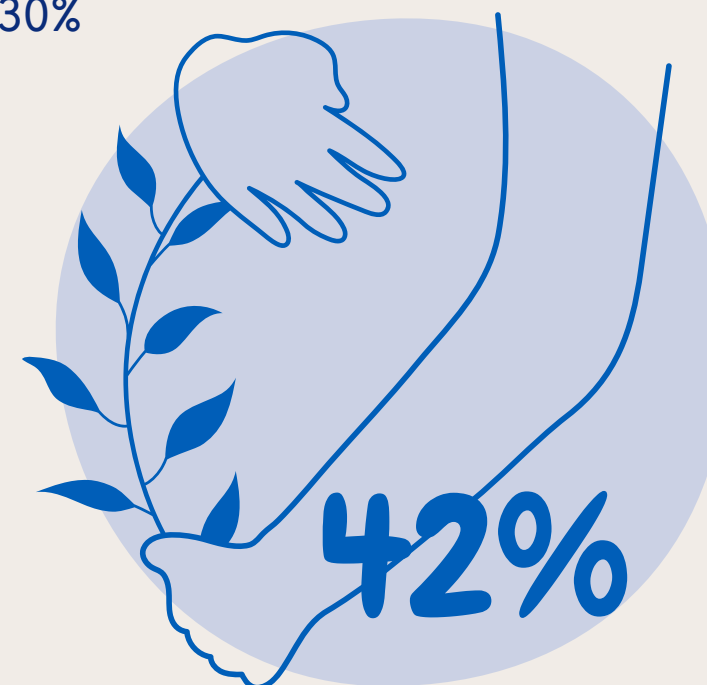


Sets of twins
born



75%

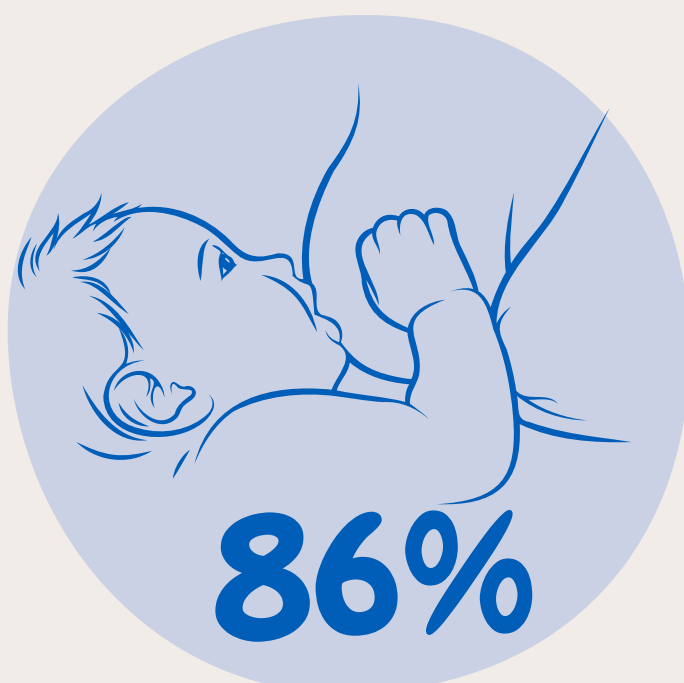
Babies had
skin-to-skin at
birth



Vaginal birth after
Caesarean (VBAC)



Busiest day



86%

of people were
breastfeeding on
discharge



99%

of people received
1:1 care in labour