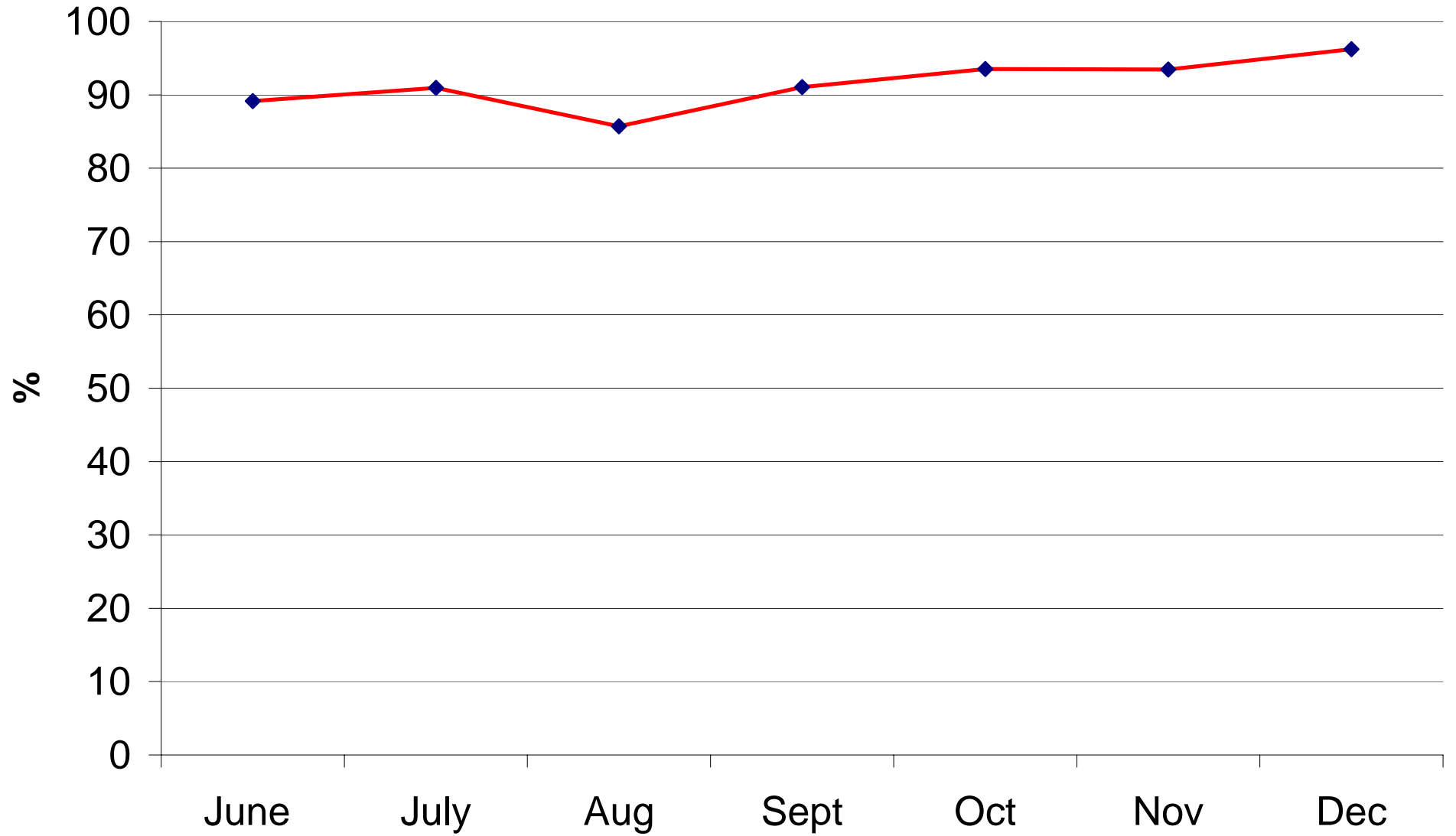
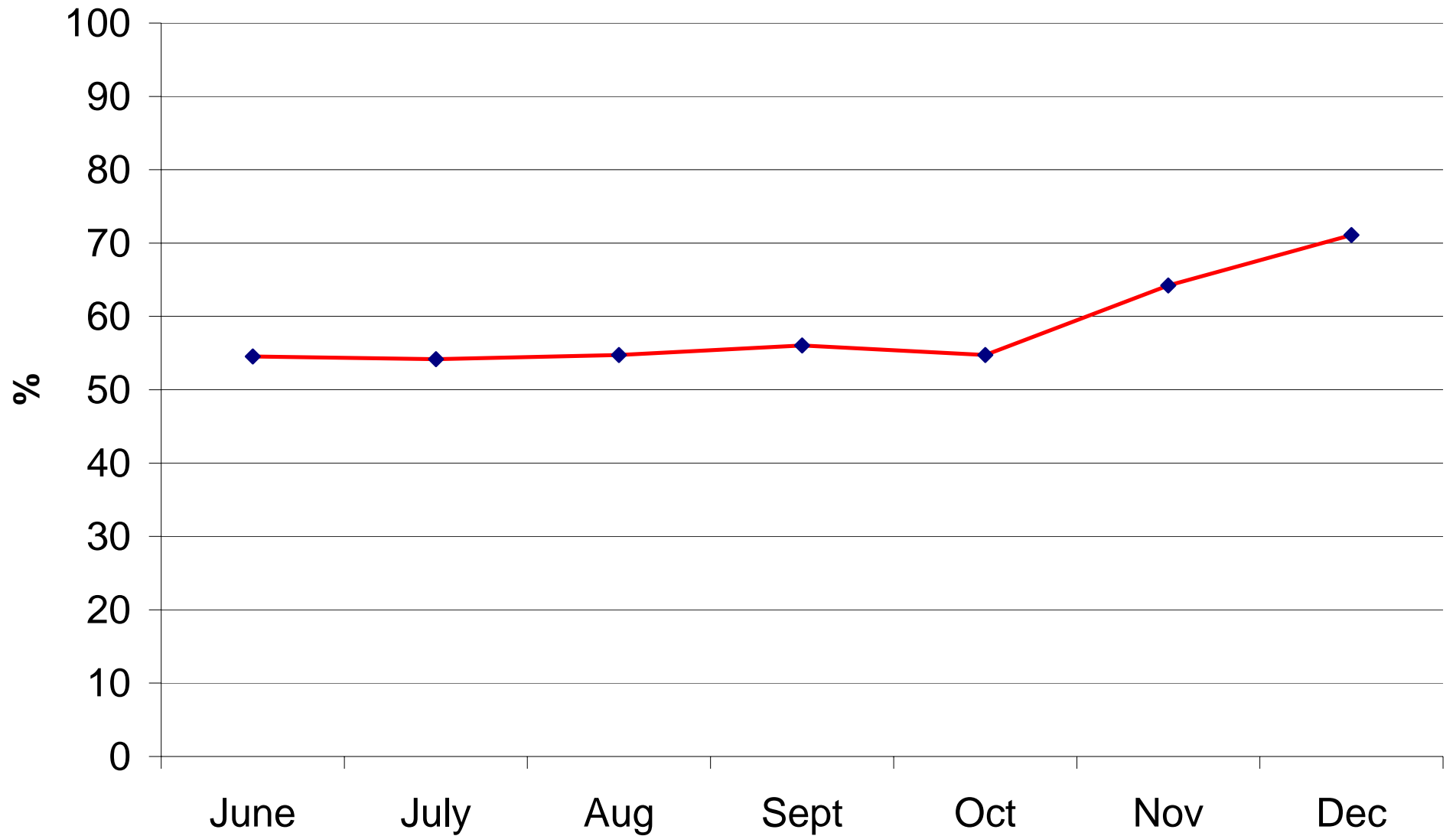


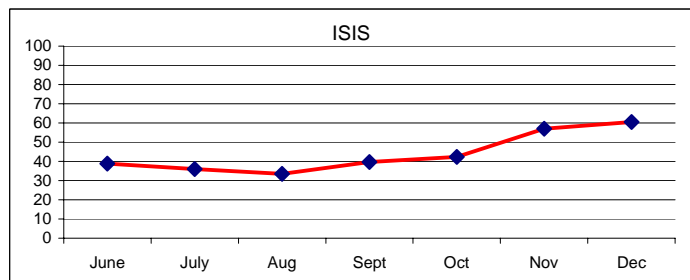
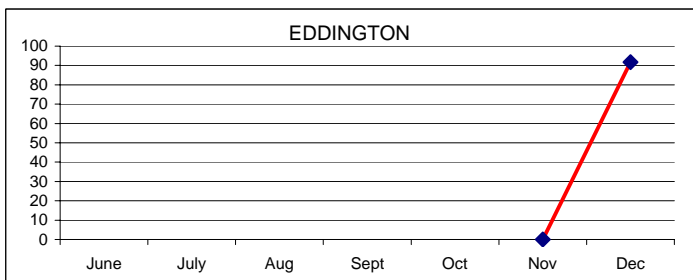
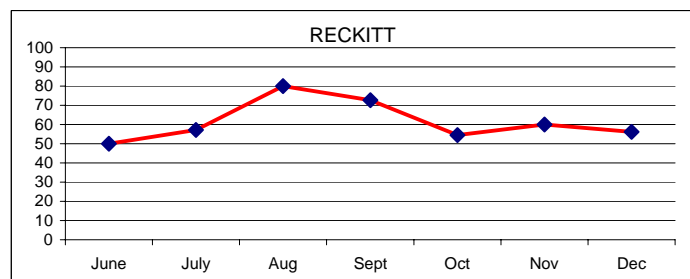
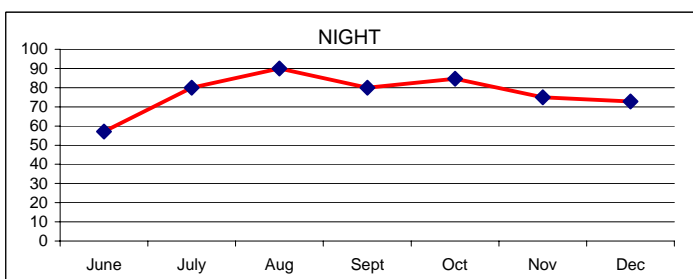
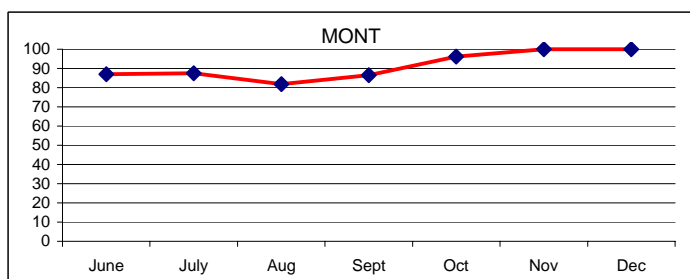
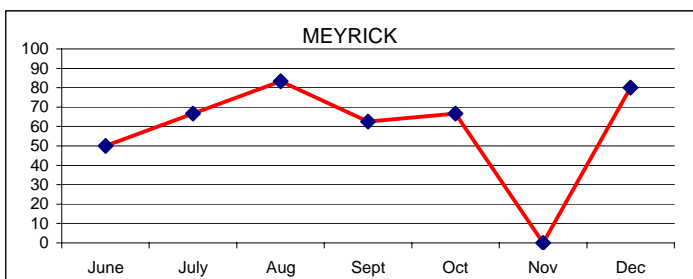
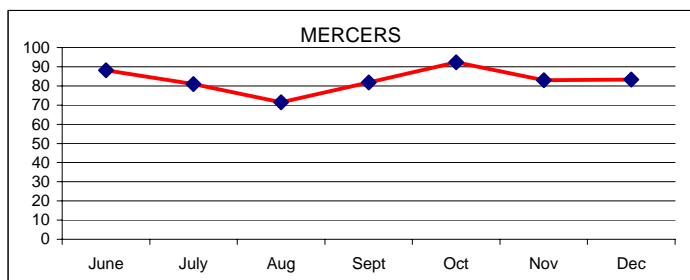
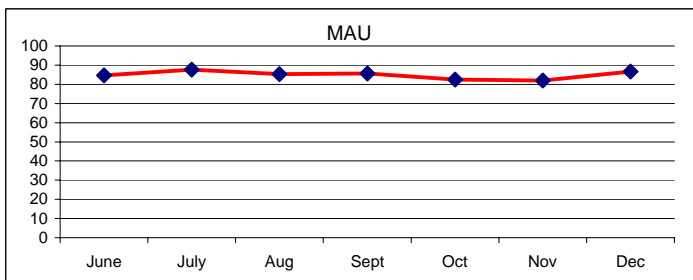
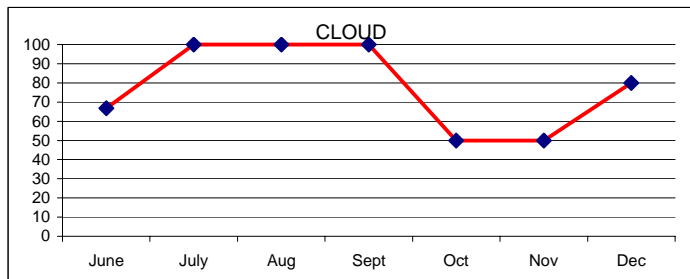
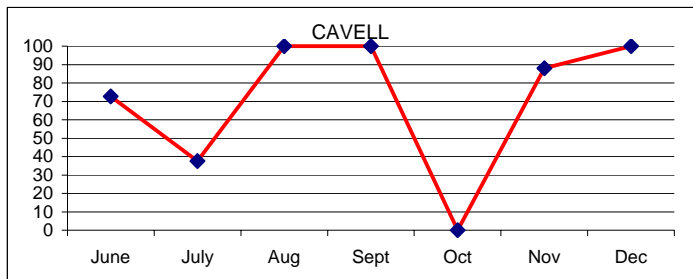
Compliance with MRSA screening for ELECTIVE SURGICAL PATIENTS (Dec Ave 96.2%)



Compliance with MRSA screening for EMERGENCY PATIENTS (Dec Ave 71.1%)



Emergency Medical Wards (Dec Ave 85.6 excl ISIS)



Emergency Surgical Wards (Dec Ave 57.6 excl ISIS)

