



**Ambitious
about Autism**

NHS

Whittington Health
NHS Trust

Visiting the Pharmacy

**A GUIDE VISITING
THE PHARMACY**



Going to the pharmacy

You may go to the pharmacy if you are **unwell** or your doctor has sent a paper **prescription or e-prescription**.



Before you go to the pharmacy information you should know:

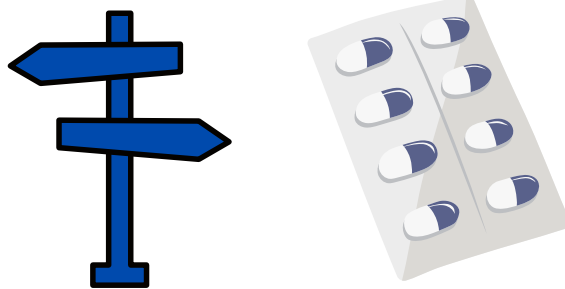
- Your **address**
- **NHS number**
- **Date of Birth**
- If you have to **pay** for medication



Talking to the pharmacist

If you are **unwell** and you are looking for **advice** you could say:

- These are my **symptoms** (list what you are feeling)
- How do I take this **new medicine**?
- Can you **write down** how I need to take this medicine?



If you have been **prescribed medicine** by your doctor:

- I am here for **my prescription**. (E- Prescription on the computer)
- **I need this** medication (show your paper prescription.)



What to do after visiting the pharmacy

The pharmacist may advise:

- To **rest**
- Take **medication**
- Suggest you seek more **urgent help**

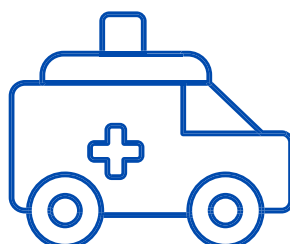


In an **emergency** you can:

- Call **999** if you need **help urgently**.
- Go to the **emergency department** in your nearest hospital.

If you are **very unwell**:

- Call **111** if you feel **very unwell** or need **advice**.



Resources that may help

Easy Read Online has created an easy read document explaining [ways a pharmacy can help](#).

For [more information](#) and finding your **nearest pharmacy**.

[Contact 111](#) online if you need **advice**, or you are **unsure**.



**Ambitious
about Autism**

NHS

Whittington Health
NHS Trust