

## Patient advice and liaison service (PALS)

If you have a compliment, complaint or concern please contact our PALS team on 020 7288 5551 or [whh-tr.whitthealthPALS@nhs.net](mailto:whh-tr.whitthealthPALS@nhs.net)

If you need a large print, audio or translated copy of this leaflet please contact us on 020 7288 3182. We will try our best to meet your needs.

### Resources used:

UCSF protocol for caries arrest using Silver Diamine Fluoride:

Rationale, indications and consent.

<https://www.ncbi.nlm.nih.gov/pmc/articles/PMC4778976/>

Photo from: Parental perceptions and acceptance of silver diamine treatment in Kingdom of Saudi Arabia

<https://www.ncbi.nlm.nih.gov/pmc/articles/PMC6436445/>

[Twitter.com/WhitHealth](https://twitter.com/WhitHealth)

[Facebook.com/WhittingtonHealth](https://facebook.com/WhittingtonHealth)

**Whittington Health NHS Trust**

Magdala Avenue

London

N19 5NF

Phone: 020 7272 3070

[www.whittington.nhs.uk](http://www.whittington.nhs.uk)

Date published: 09/06/2020

Review date: 09/06/2022

Ref: SC/Dent/SDF/01

© Whittington Health

Please recycle

**NHS**

**Whittington Health**

NHS Trust



# Silver Diamine Fluoride

## A guide for Children and Parents



## What is Silver Diamine Fluoride?

Silver Diamine Fluoride is a liquid that releases silver and fluoride ions over time. It is painted onto teeth with dental decay. It is used in many countries around the world.

## What does Silver Diamine Fluoride do?

Silver Diamine Fluoride has been shown to arrest dental decay, this means that the decay stops getting worse. It can be used when it isn't possible to place fillings, for example in very young children who won't sit still for long periods of time or children with special needs. Silver Diamine Fluoride is used to reduce the risk of tooth decay causing pain and infection.

## When is Silver Diamine Fluoride not suitable?

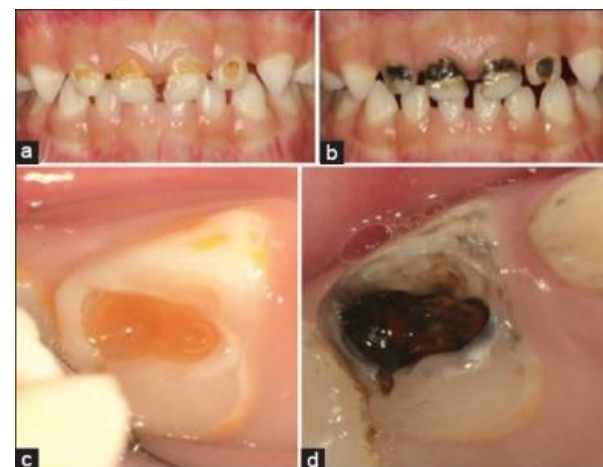
Silver Diamine Fluoride is not suitable for teeth which are causing pain or have signs of infection. It is also not suitable for children who are unable to sit still and open their mouth long enough for it to be applied.

## How is Silver Diamine Fluoride applied?

Your child's clothes will be protected with a plastic bib. The tooth to be treated is dried and cotton wool placed next to it. The silver diamine fluoride liquid is applied with a small brush, left for a minute, then the tooth is washed with water. The treatment may be repeated every 6 months to maintain its effectiveness.

## What do teeth look like after treatment?

Silver Diamine Fluoride will cause decayed tooth tissue to turn permanently black. Only the decayed parts of the tooth will turn black. Depending on your child it may be possible to mask the black staining with a filling once they are older or more able to cooperate for dental treatment



Before and after treatment with Silver Diamine Fluoride